

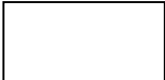
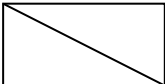


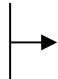
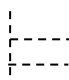
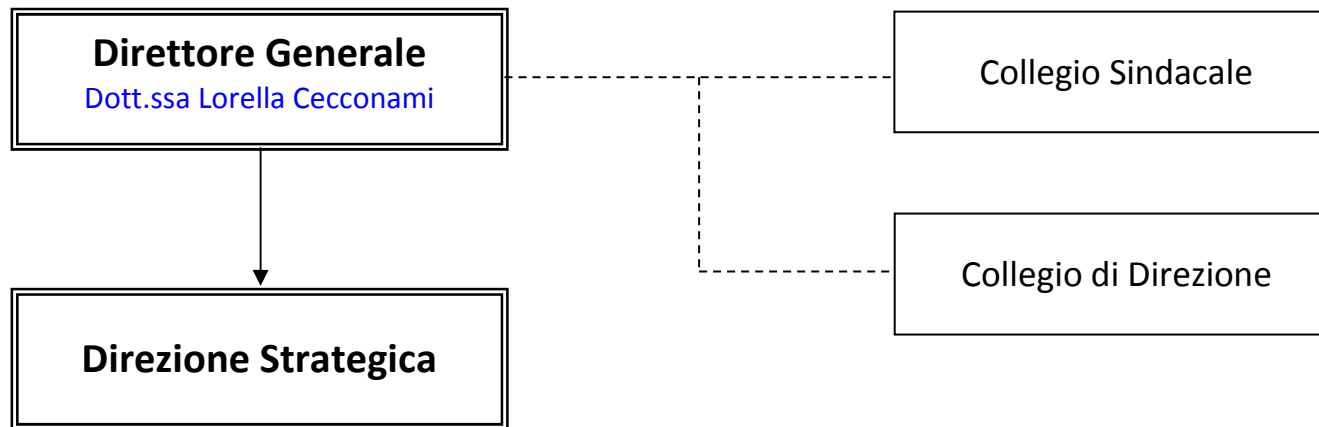


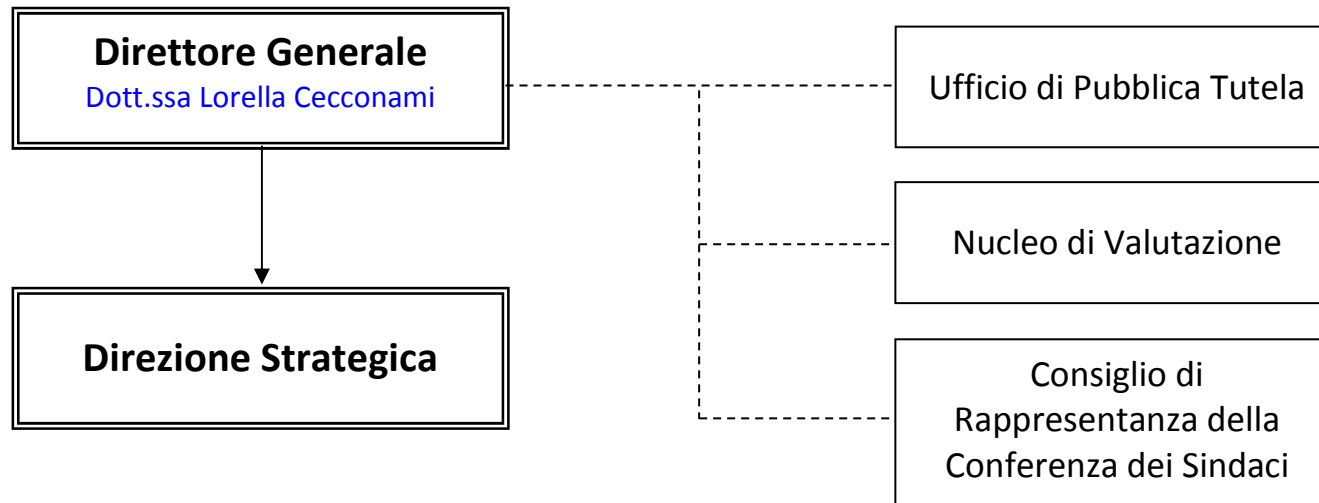


<b>Legenda Strutture</b>	
	<b>Dipartimenti Gestionali</b>
	<b>Strutture complesse</b>
	<b>Strutture semplici</b>
	<b>Strutture semplici dipartimentali</b>
	<b>Dipartimenti funzionali</b>
<b>Legenda Relazioni</b>	
	<b>Dipendenza gerarchica</b>
	<b>Staff di una direzione</b>
	<b>Relazioni dipartimenti funzionali</b>
<b>Acronimi utilizzati:</b>	
VAL= Valtellina Alto Lario    VCS=Valcamonica    ALTO LARIO = Alto Lario    VALT= Valtellina	

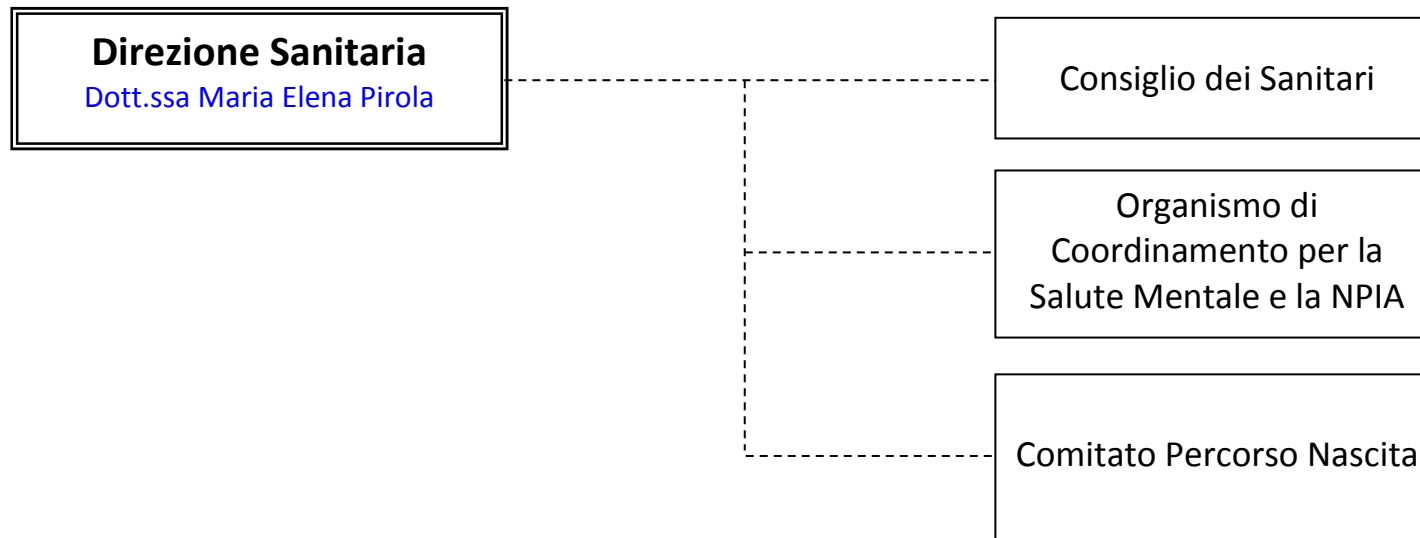
## Organi Aziendali



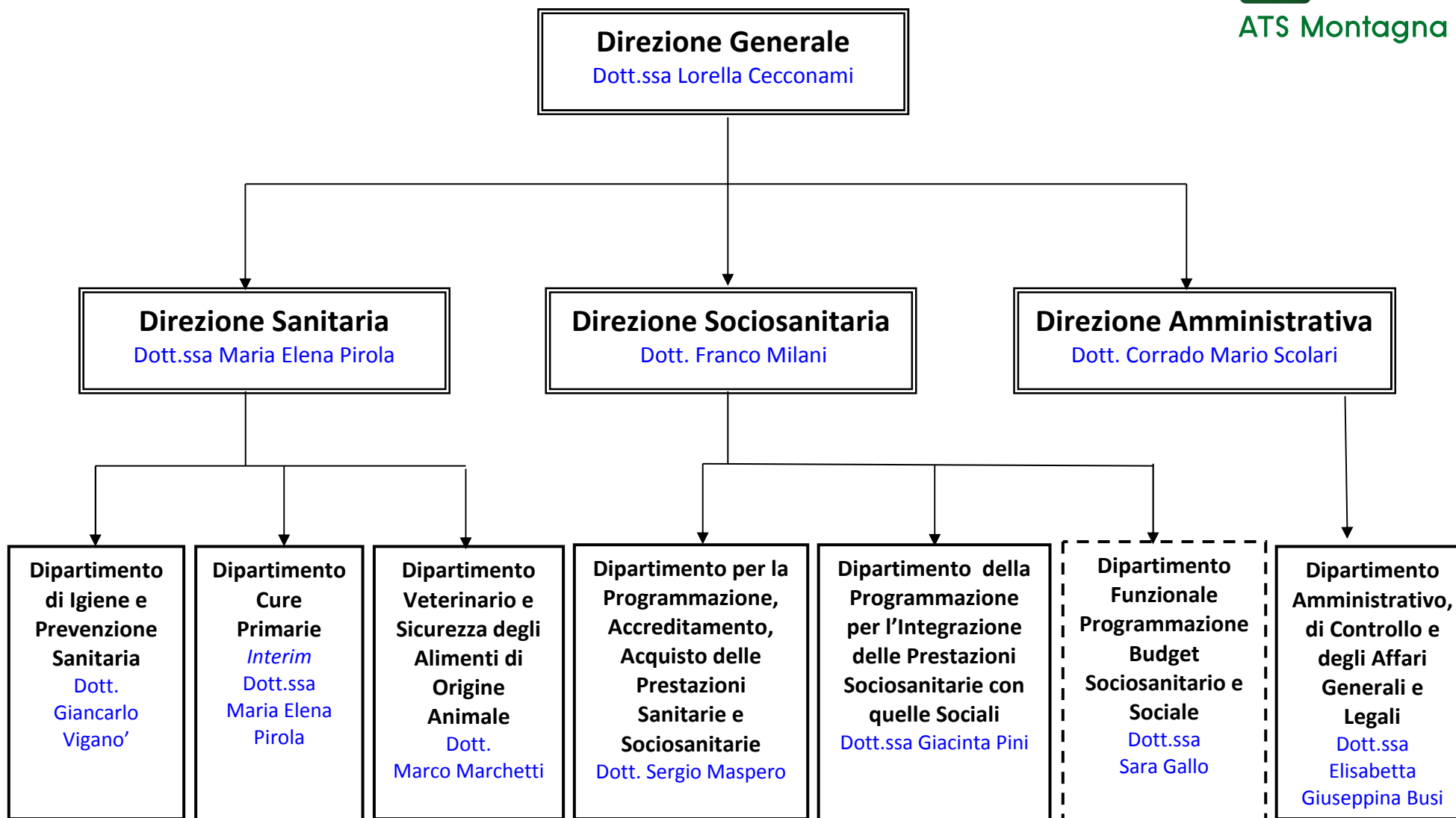
## Organismi Aziendali

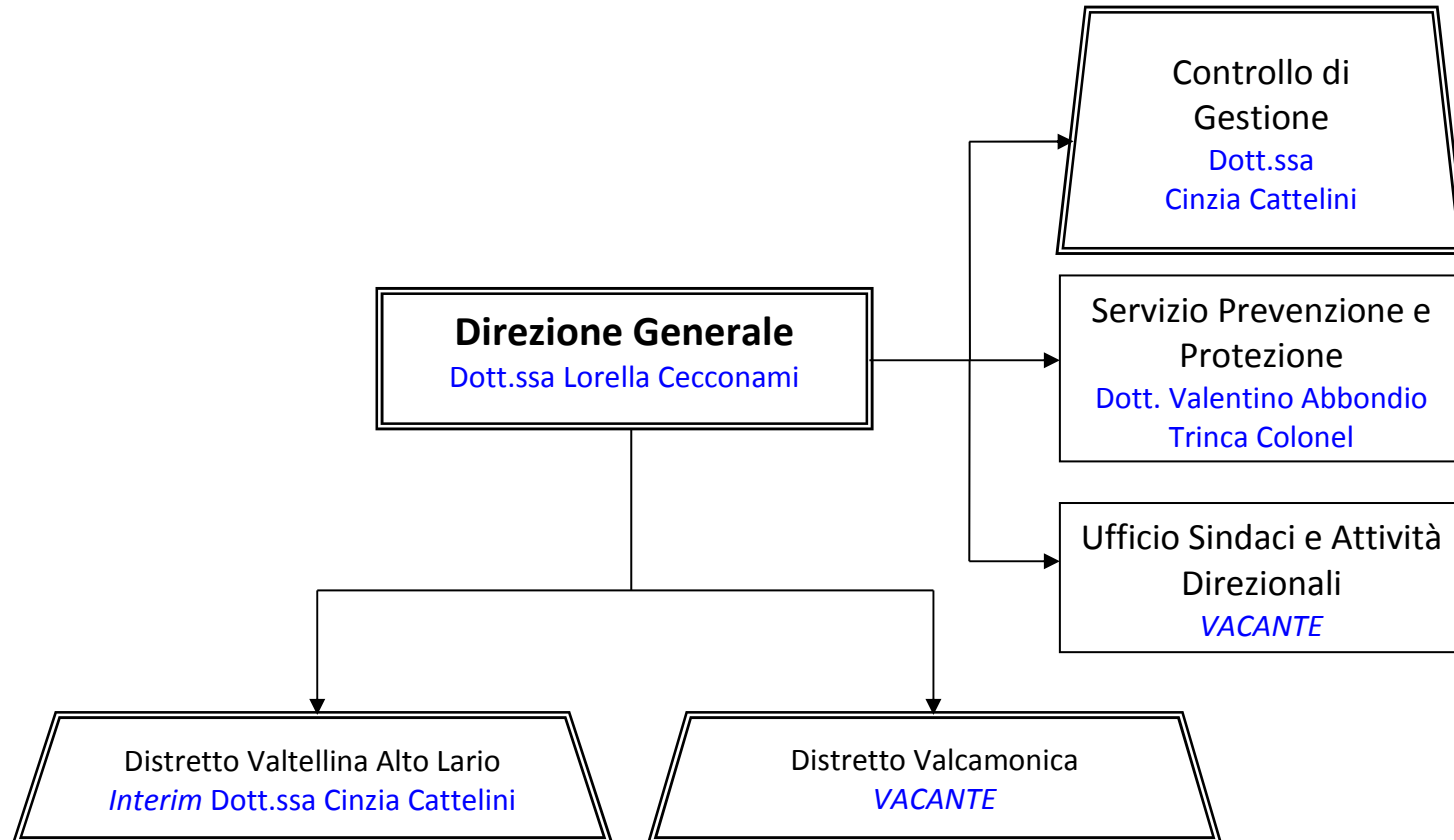


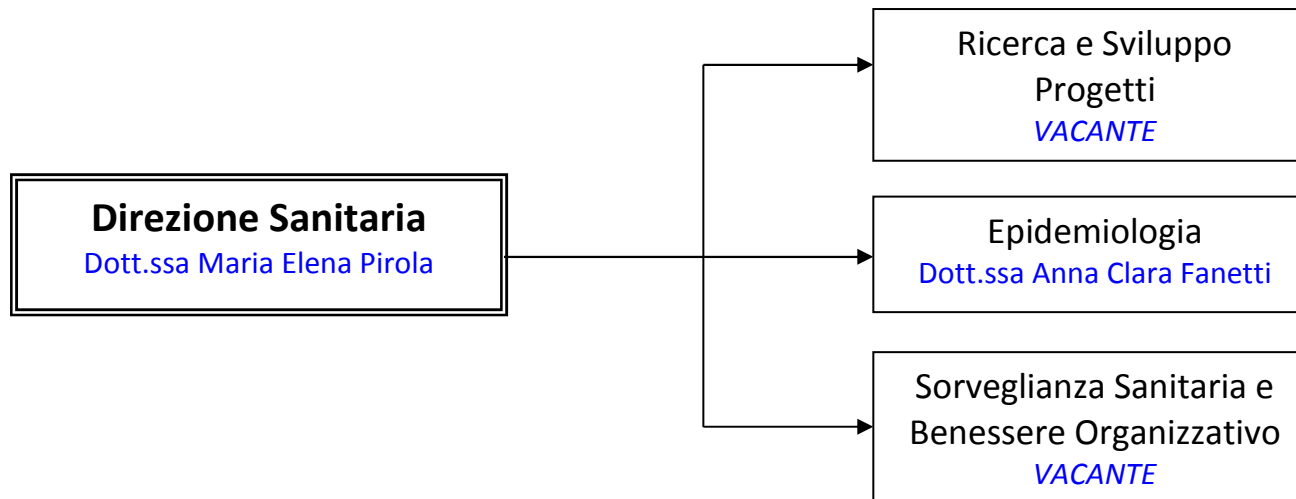
Organismi Aziendali

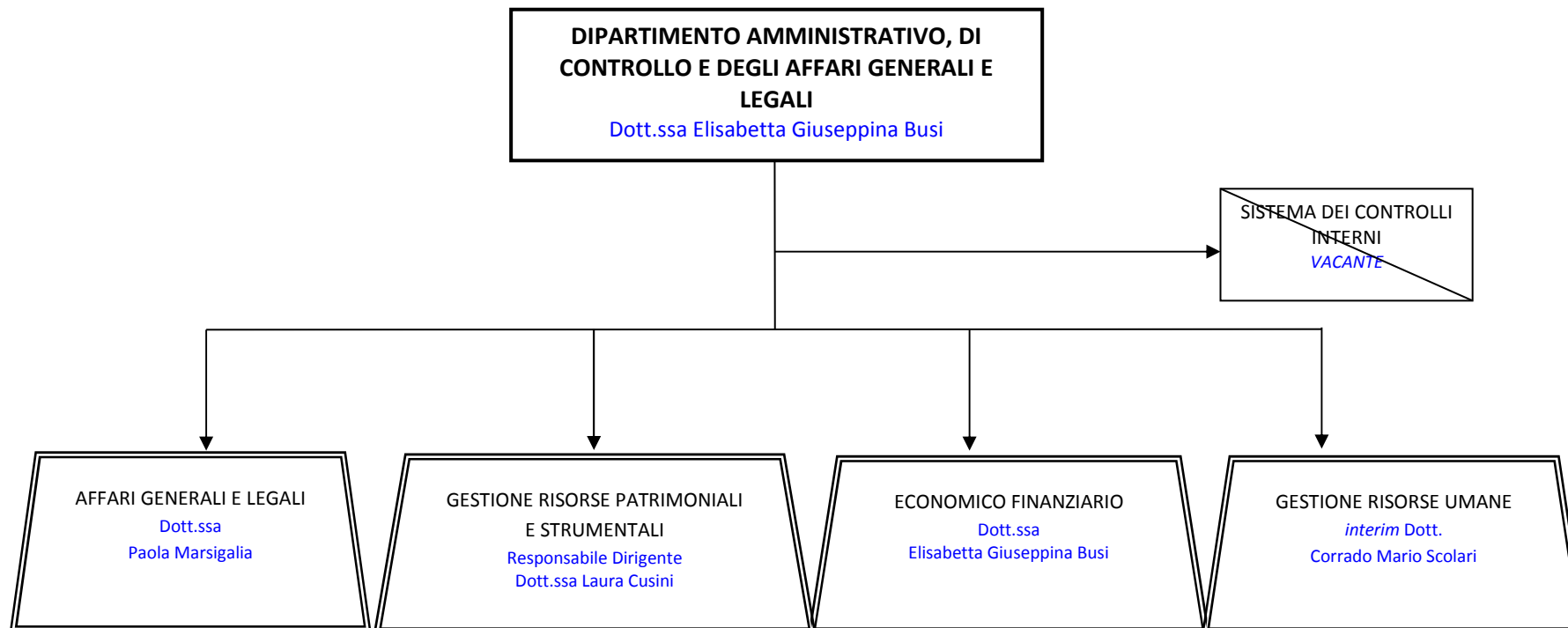


## Direzioni e Dipartimenti

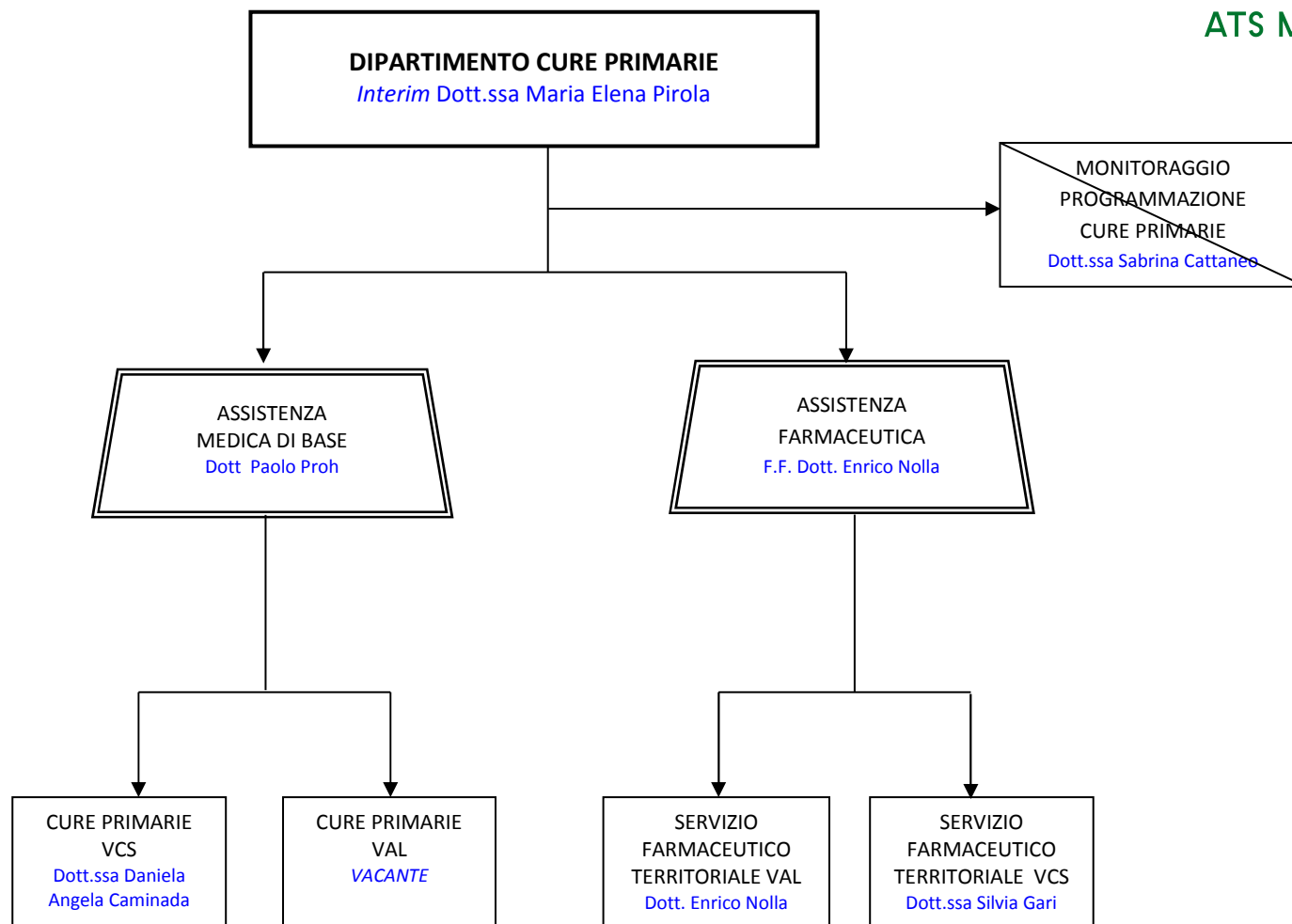


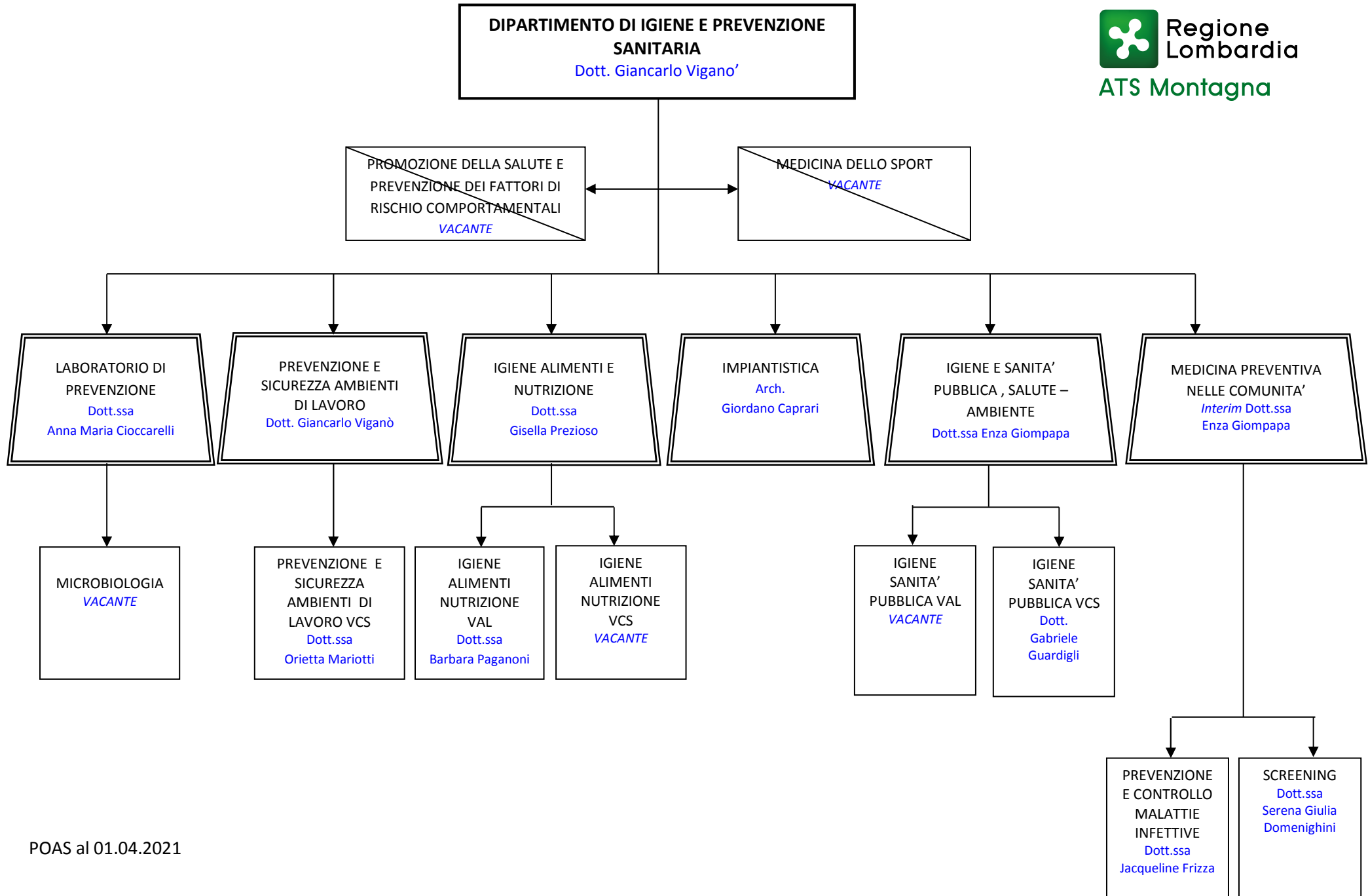












**DIPARTIMENTO VETERINARIO E SICUREZZA  
DEGLI ALIMENTI DI ORIGINE ANIMALE**  
Dott. Marco Marchetti

**AREA COORDINAMENTO TERRITORIALE  
VALLECAMONICA-SEBINO**  
F.F. Dott. Lucio Turetti

SANITA' PUBBLICA  
VETERINARIA VCS  
Dott.  
Alessandro Massone

DISTRETTO  
VETERINARIO VCS  
Dott. Lucio Turetti

SANITA' ANIMALE  
(AREA A)  
Dott. Fabio Orsi

IGIENE DELLA PRODUZIONE,  
TRASFORMAZIONE,  
COMMERCIALIZZAZIONE,  
CONSERVAZIONE E TRASPORTO  
DEGLI ALIMENTI DI ORIGINE  
ANIMALE (AREA B)  
Dott. Marco Marchetti

IGIENE DEGLI  
ALLEVAMENTI E DELLE  
PRODUZIONI  
ZOOTECNICHE (AREA C)  
Dott. Oreste Zecca

AREA A VCS  
Dott.  
Alessandro  
Eterovich

AREA B VCS  
Dott.ssa  
Marianna Parisi

AREA C VCS  
Dott.  
Francesco  
Di Leo

~~DISTRETTO  
VETERINARIO  
EST VALT  
Dott.  
Nicola Martinelli~~

~~DISTRETTO  
VETERINARIO  
CENTRO VALT  
Dott.  
Pier Luigi Bongiolatti~~

~~DISTRETTO  
VETERINARIO  
OVEST VALT  
Dott.  
Walter Acquistapace~~

~~DISTRETTO  
VETERINARIO  
ALTO LARIO  
Dott.  
Massimo Campagnani~~

~~FILIERA  
ALIMENTARE  
Dott.  
Massimo Battistessa~~

~~IGIENE URBANA  
Dott.ssa  
Silvia Fiorina~~

