


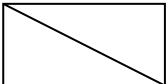


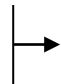
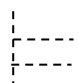
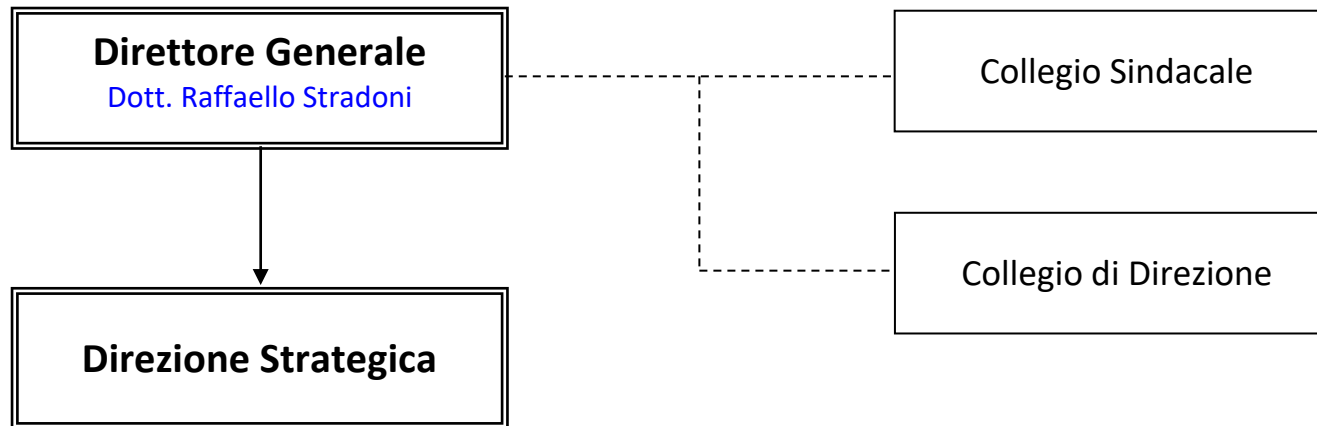
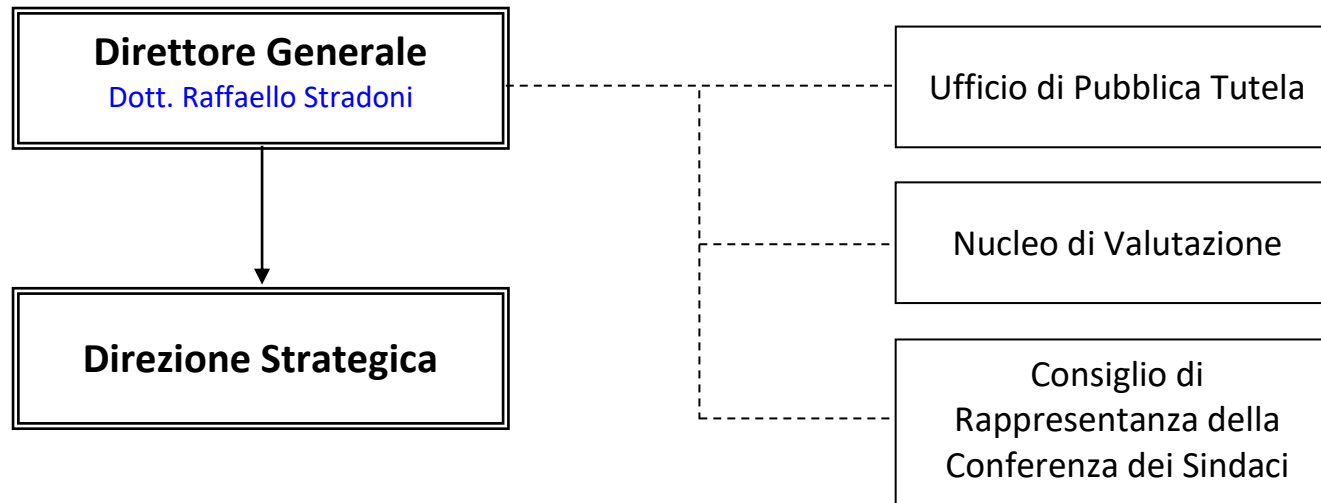


<b>Legenda Strutture</b>	
	<b>Dipartimenti Gestionali</b>
	<b>Strutture complesse</b>
	<b>Strutture semplici</b>
	<b>Strutture semplici dipartimentali</b>
	<b>Dipartimenti funzionali</b>
<b>Legenda Relazioni</b>	
	<b>Dipendenza gerarchica</b>
	<b>Staff di una direzione</b>
	<b>Relazioni dipartimenti funzionali</b>
<b>Acronimi utilizzati:</b>	
VAL= Valtellina Alto Lario    VCS=Valcamonica    ALTO LARIO = Alto Lario    VALT= Valtellina	

## Organi Aziendali



## Organismi Aziendali

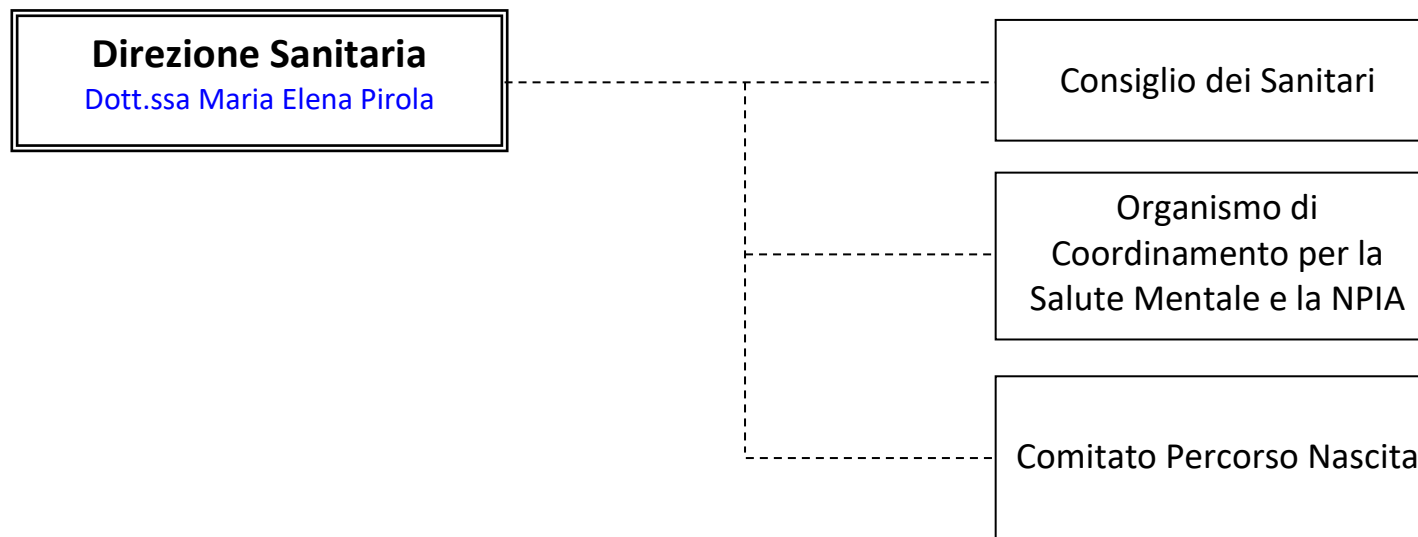


## Organismi Aziendali

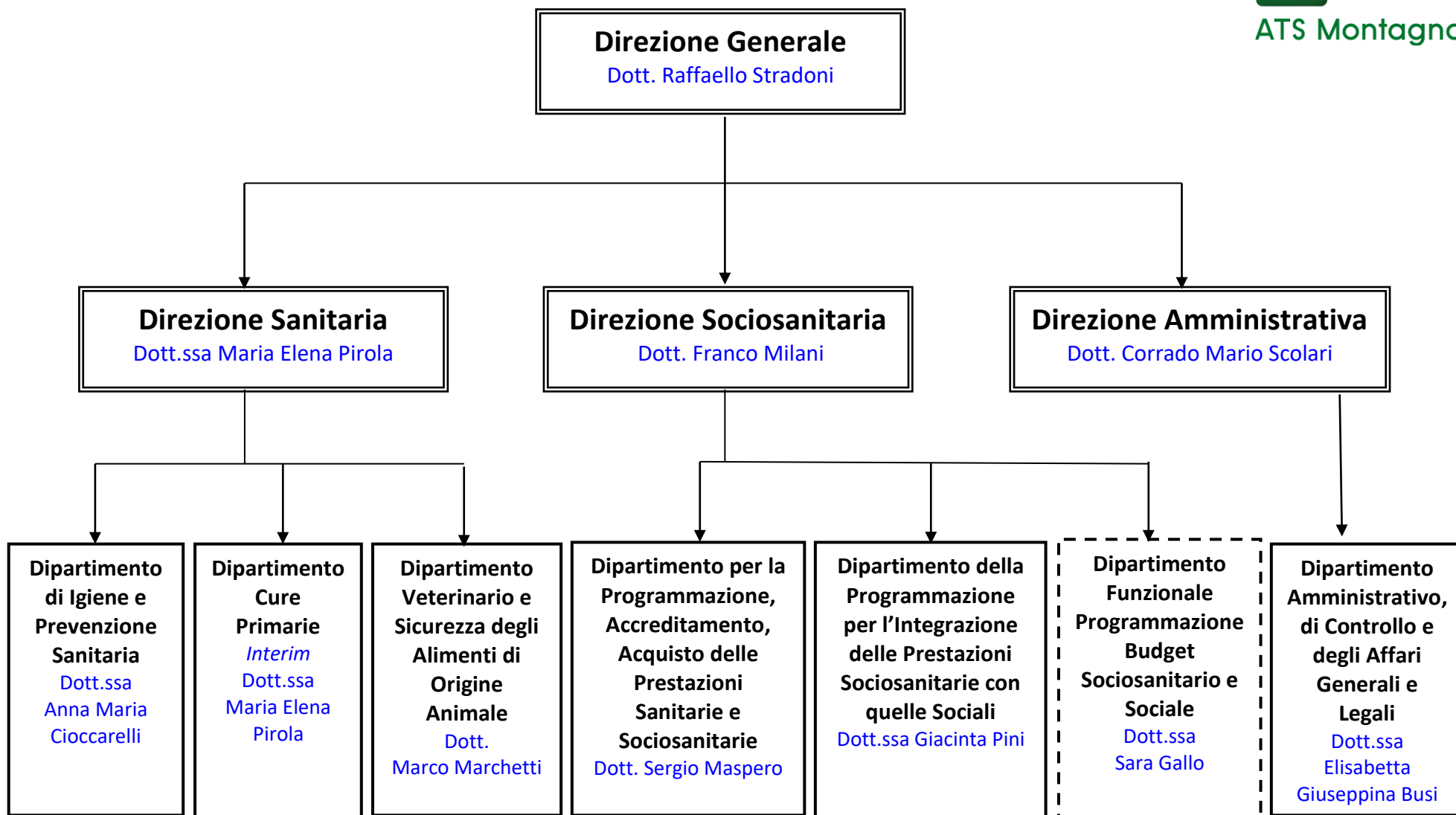
Sistema Socio Sanitario

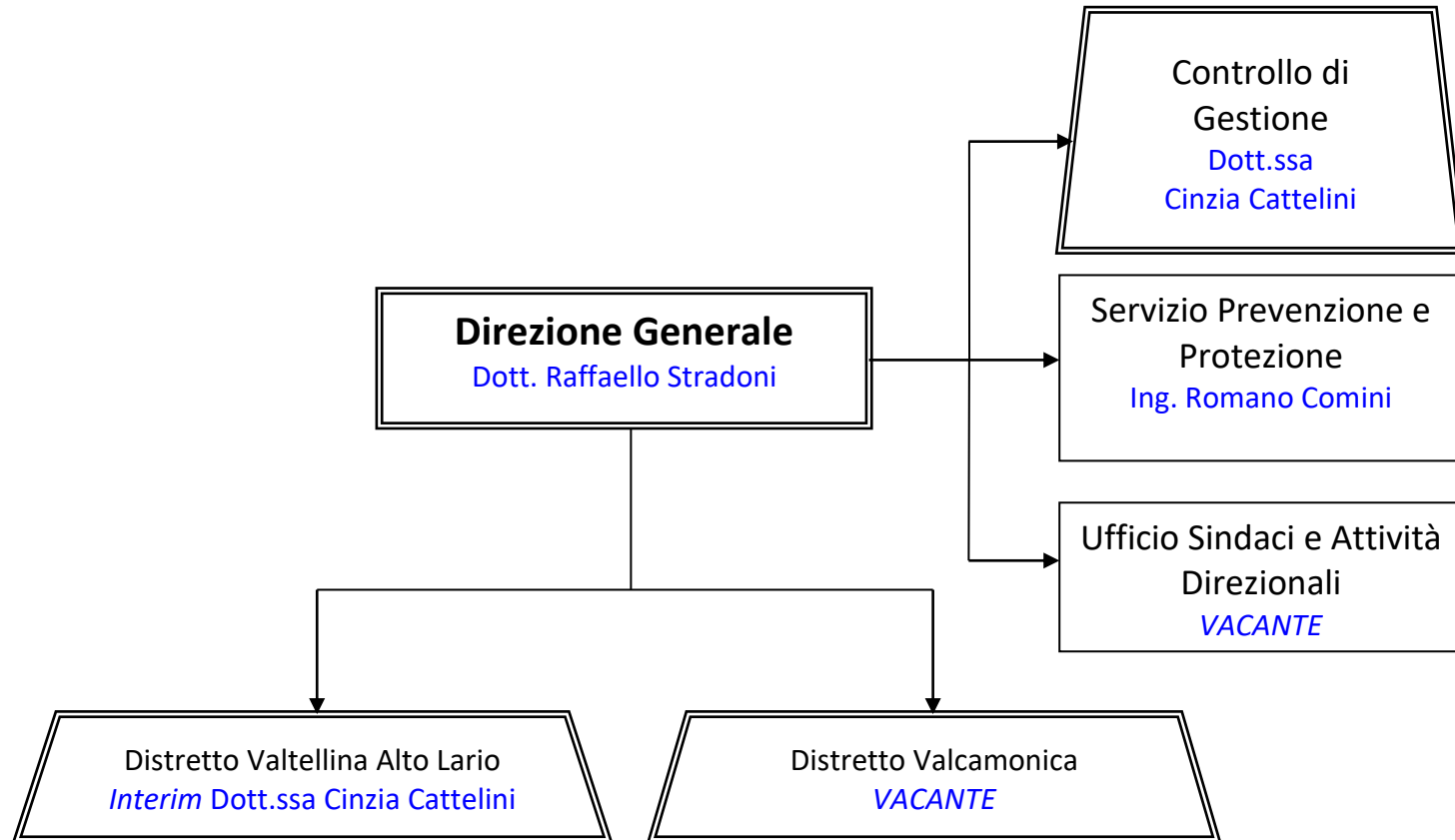


ATS Montagna

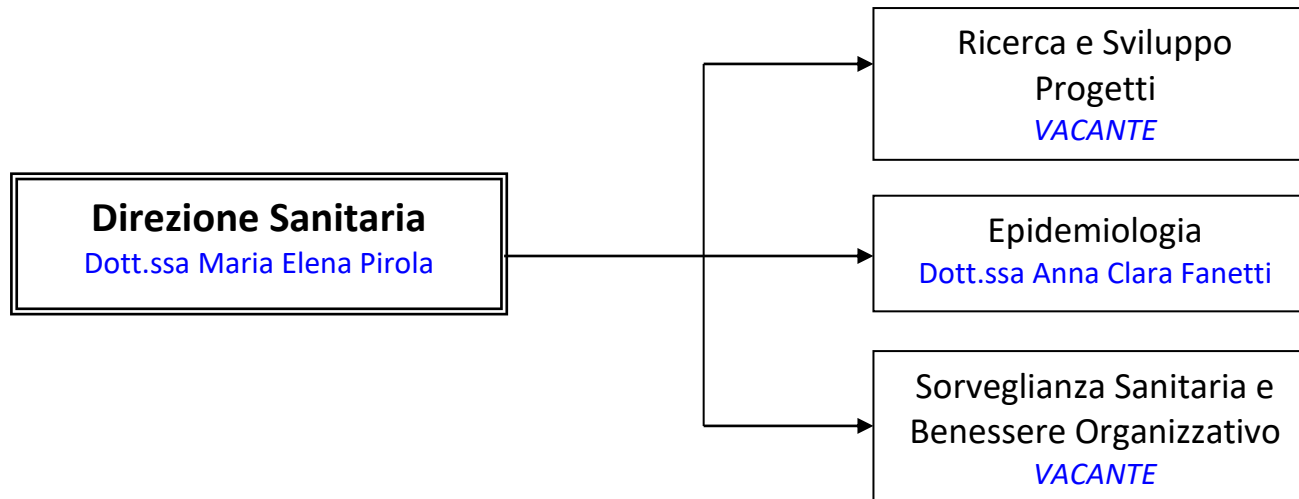


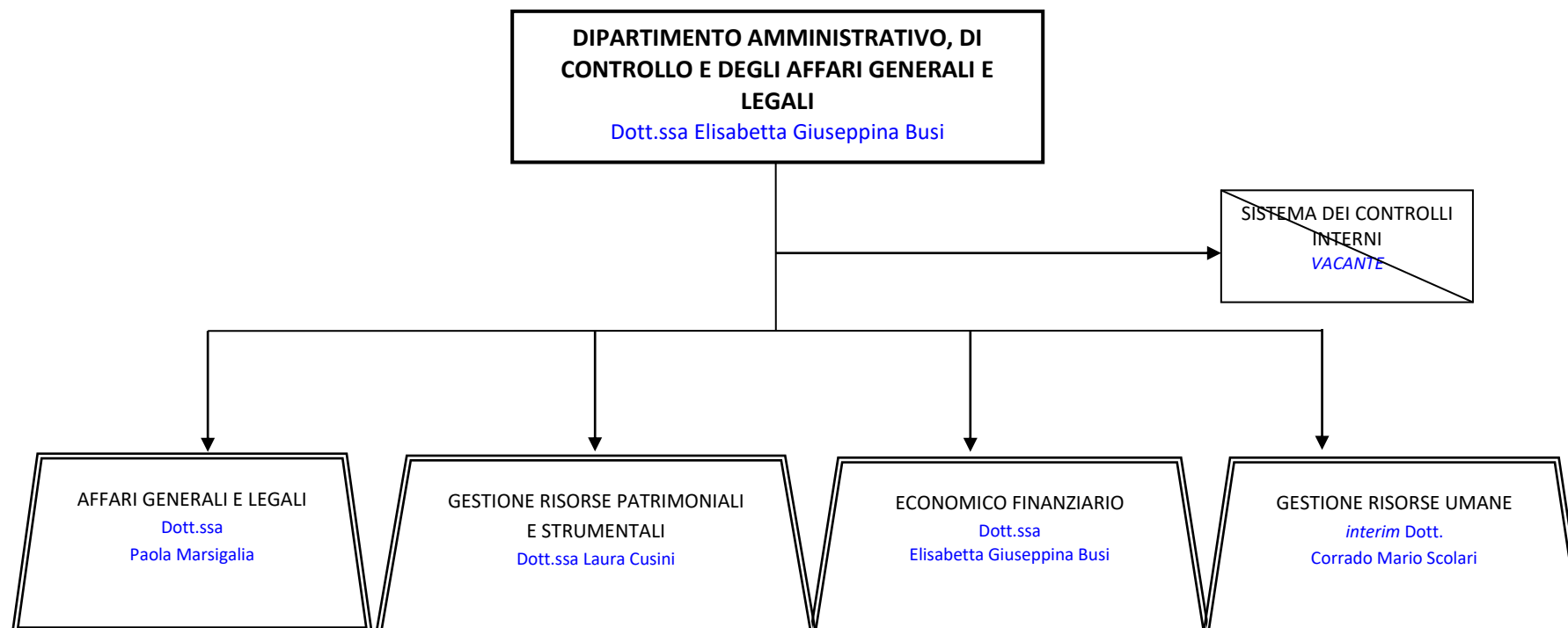
## Direzioni e Dipartimenti



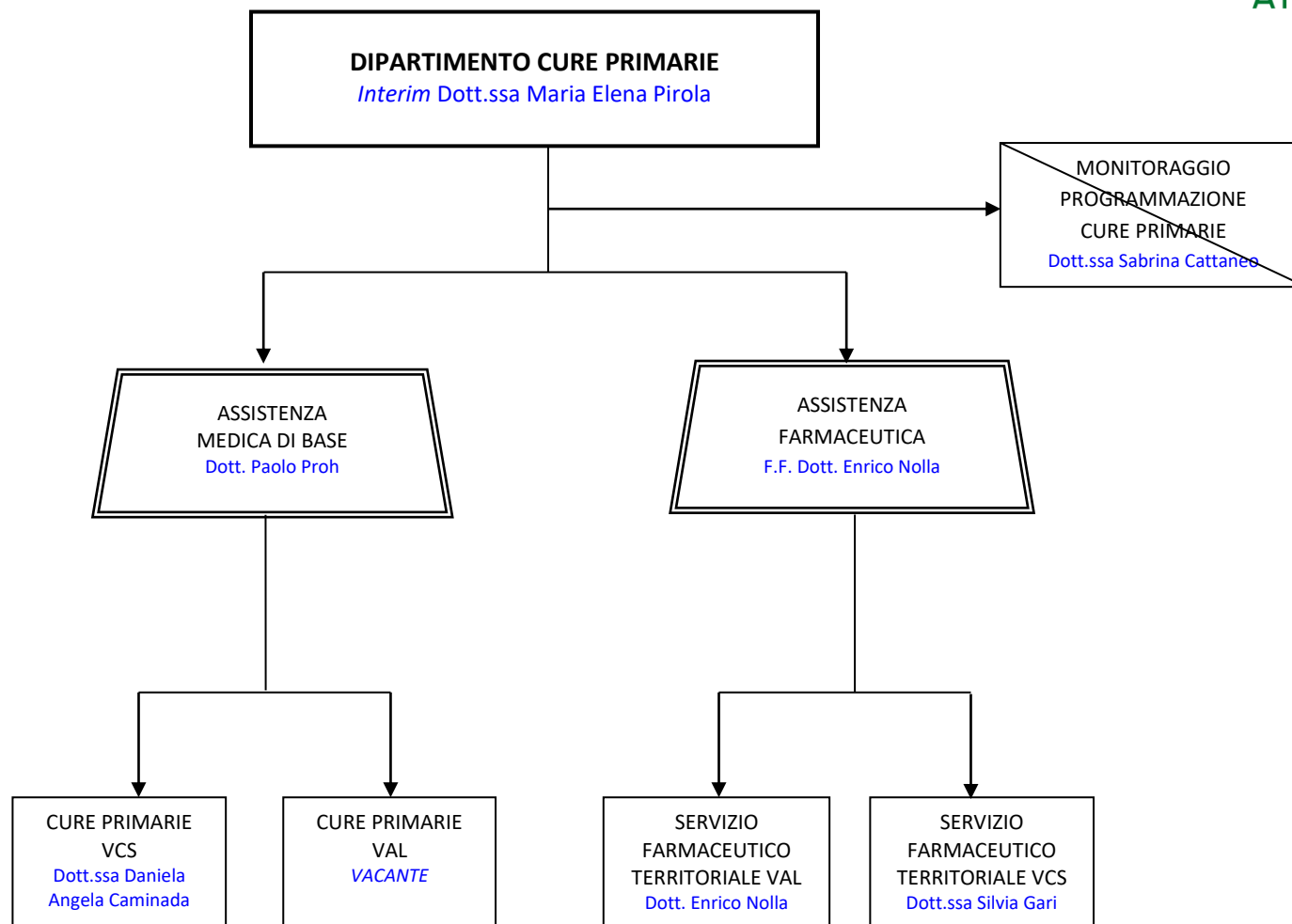


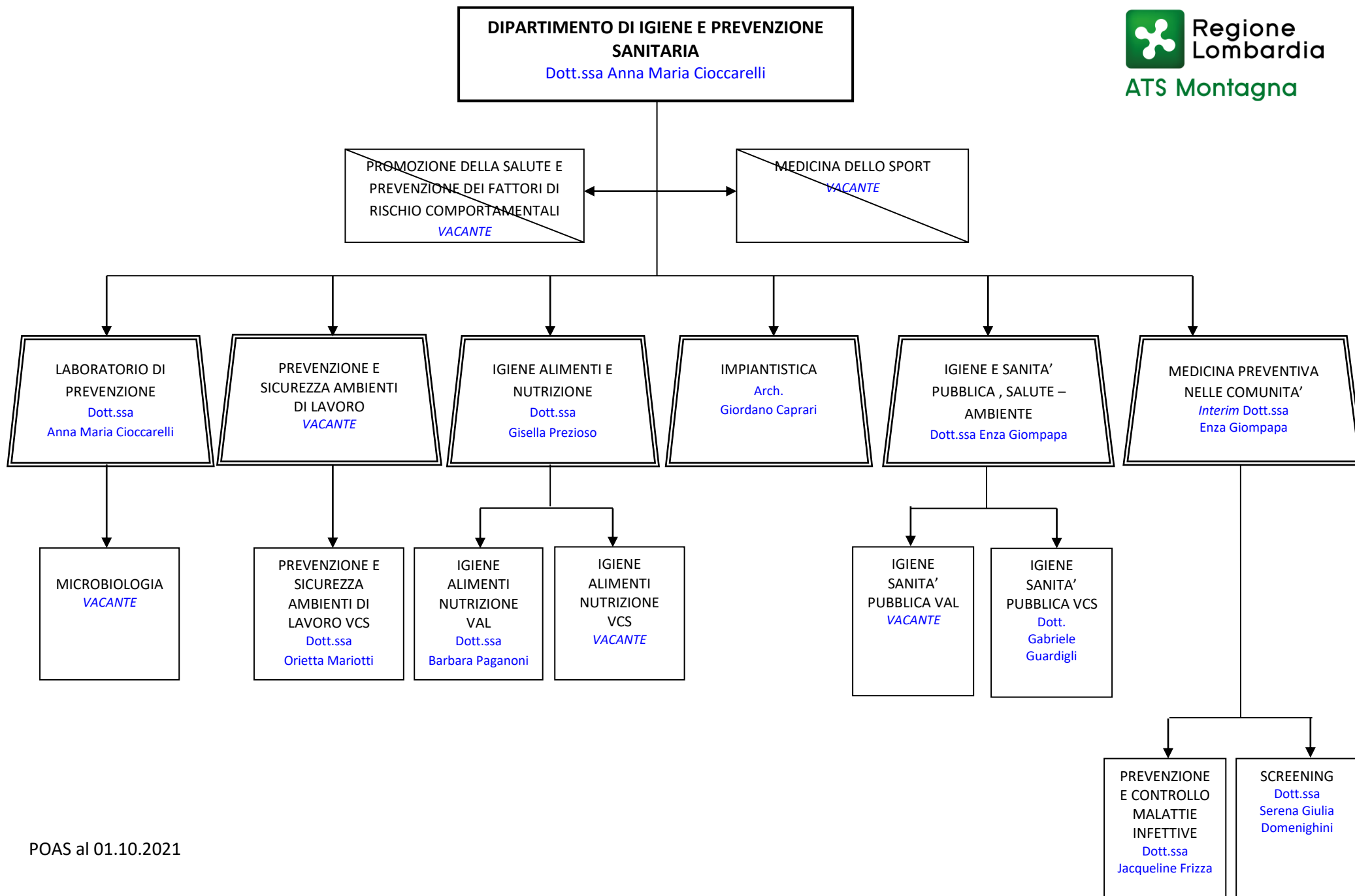
Staff Direzione Sanitaria



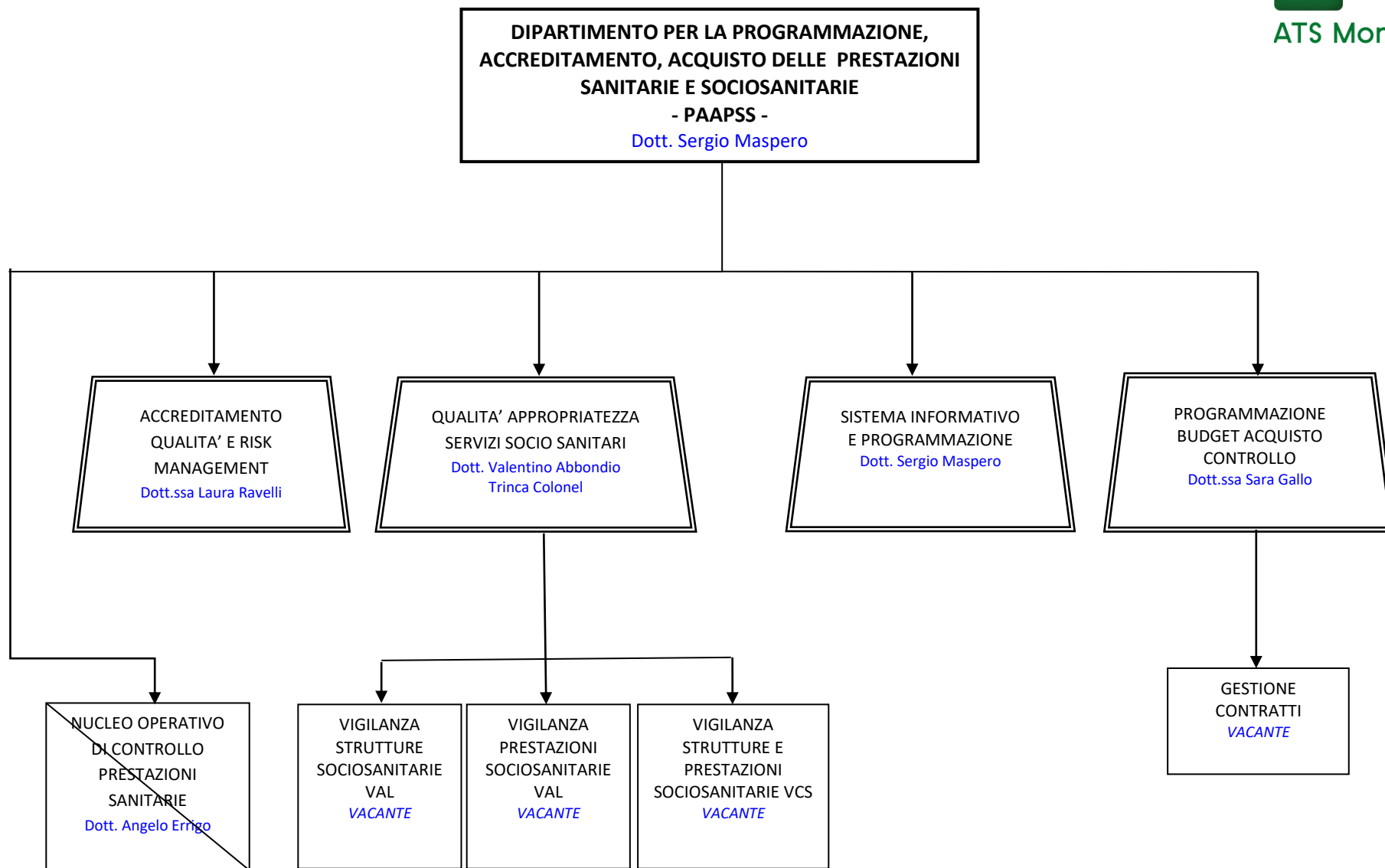












**DIPARTIMENTO DELLA PROGRAMMAZIONE  
PER L'INTEGRAZIONE DELLE PRESTAZIONI  
SOCIOSANITARIE CON QUELLE SOCIALI  
- PIPSS -  
Dott.ssa Giacinta Pini**

