

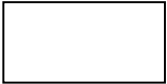
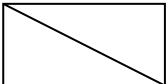


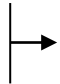
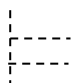
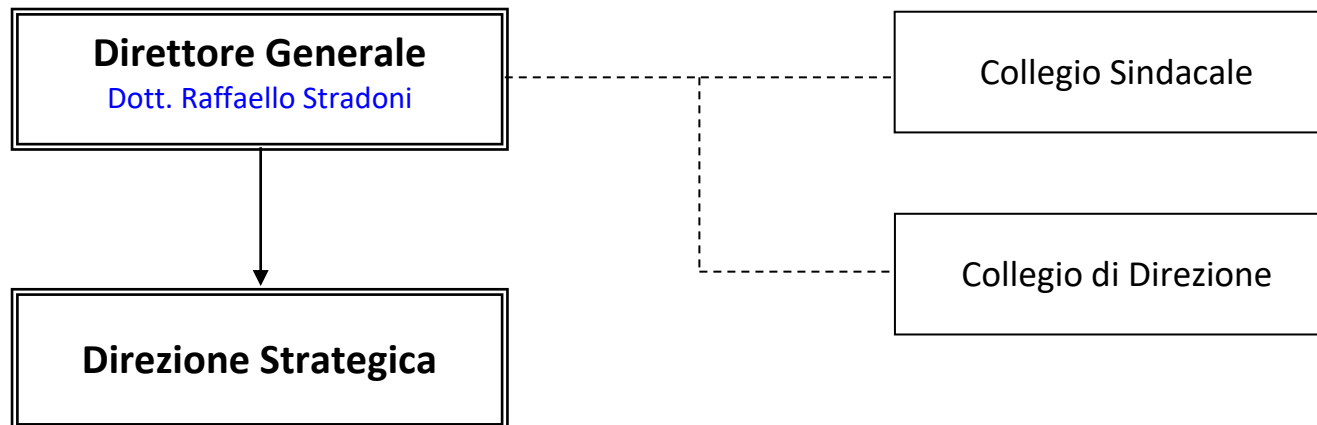
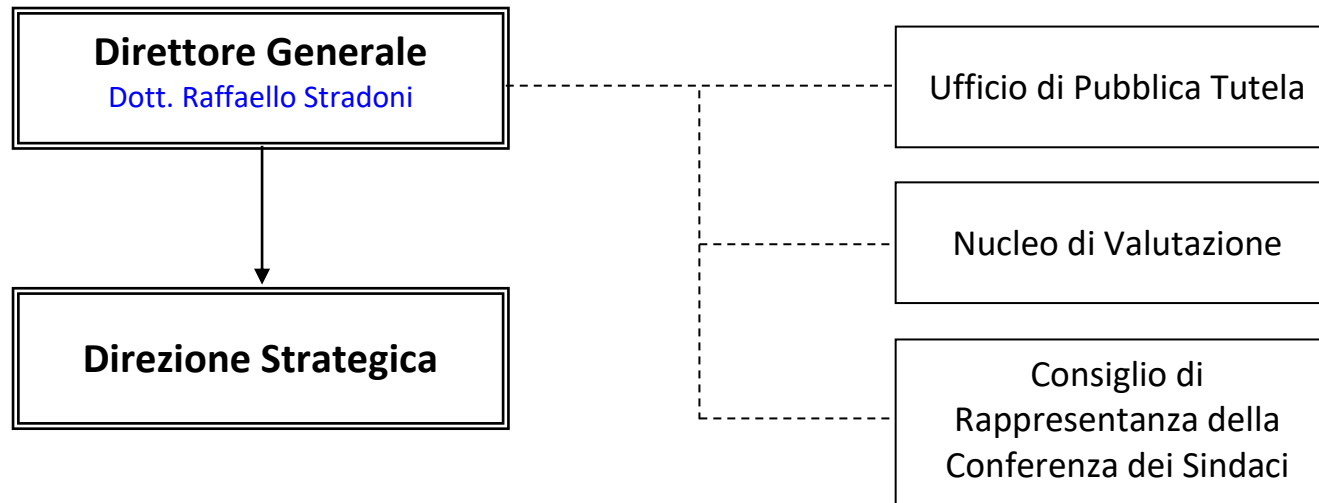


Legenda Strutture	
	Dipartimenti Gestionali
	Strutture complesse
	Strutture semplici
	Strutture semplici dipartimentali
	Dipartimenti funzionali
Legenda Relazioni	
	Dipendenza gerarchica
	Staff di una direzione
	Relazioni dipartimenti funzionali
Acronimi utilizzati:	
VAL= Valtellina Alto Lario VCS=Valcamonica ALTO LARIO = Alto Lario VALT= Valtellina	

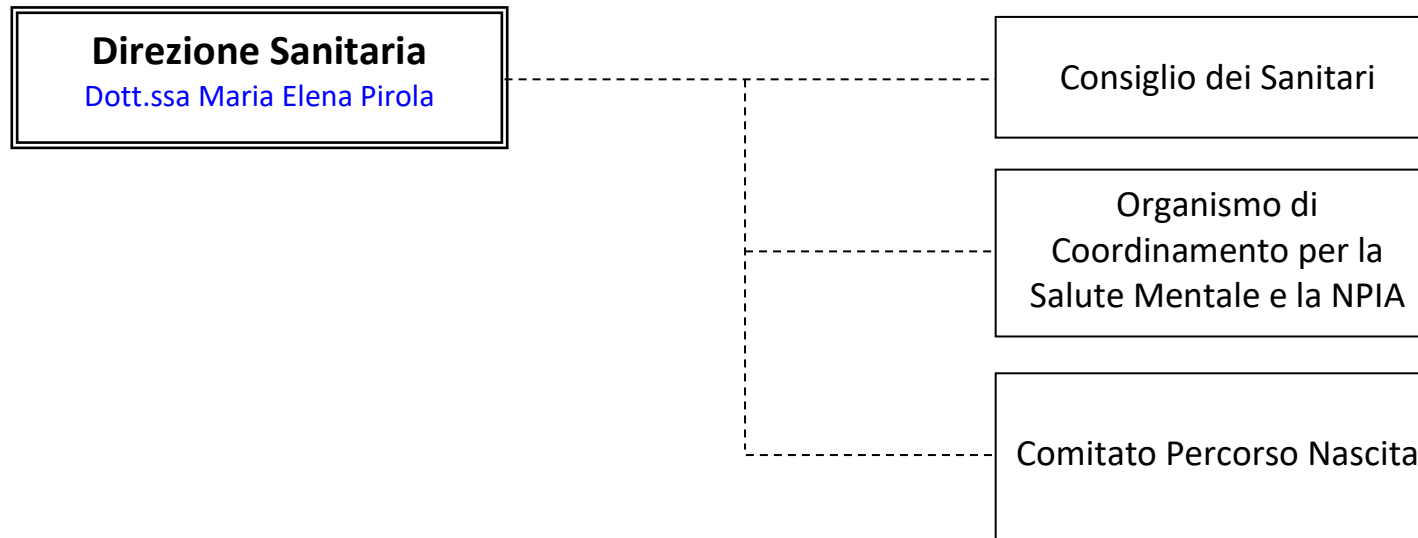
Organi Aziendali



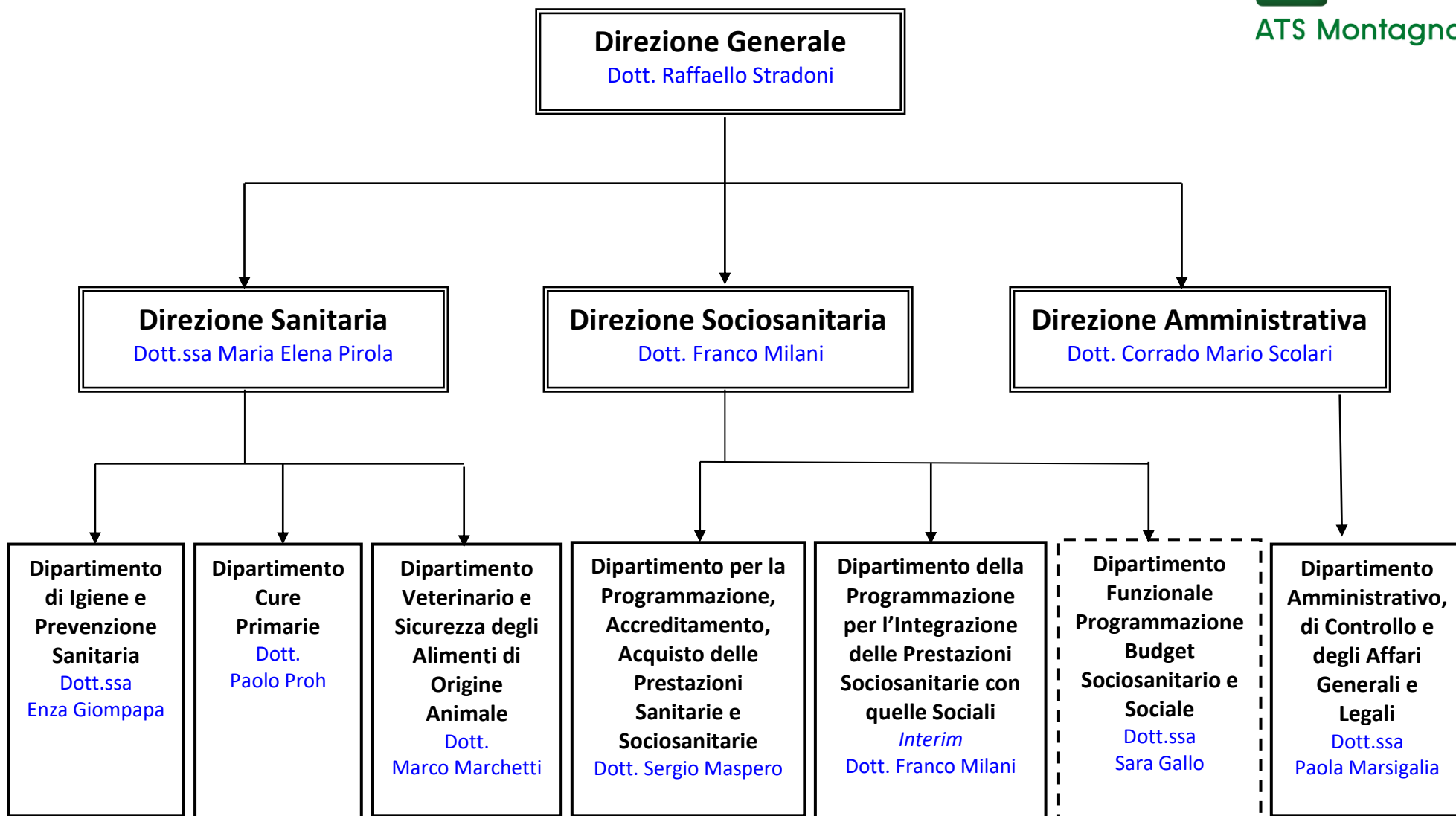
Organismi Aziendali

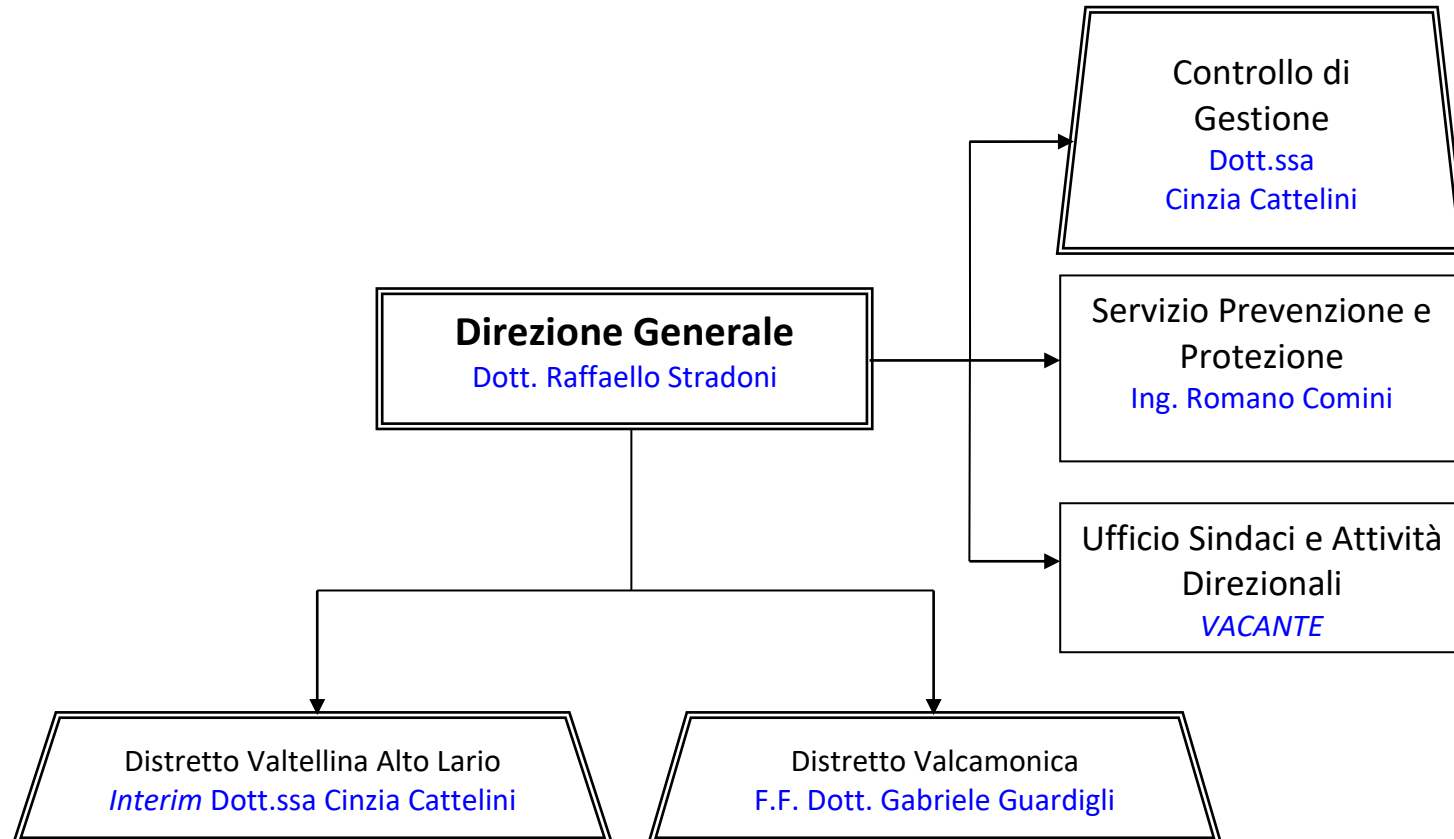


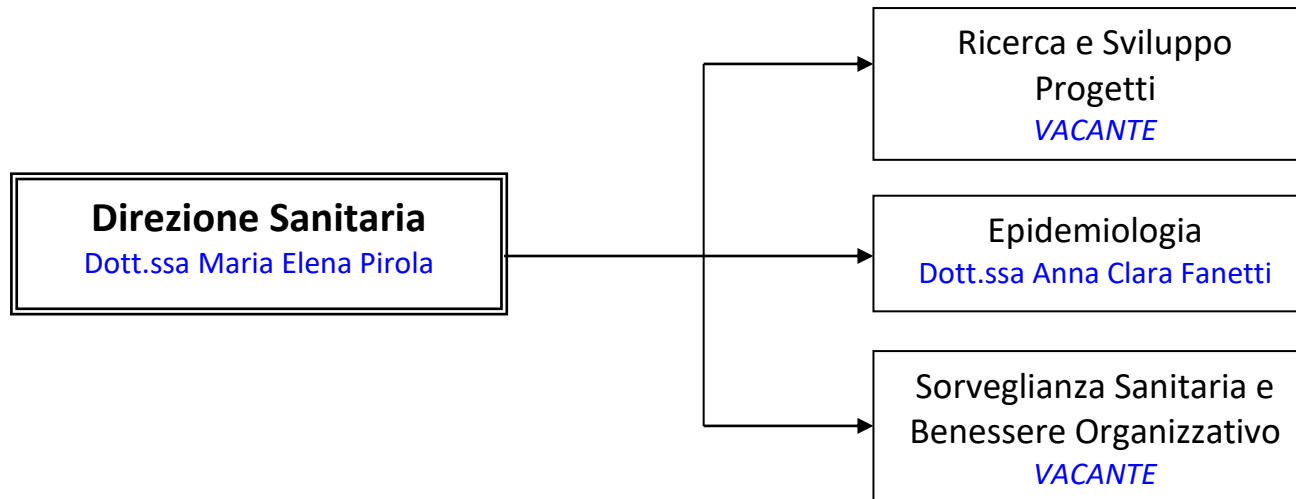
Organismi Aziendali

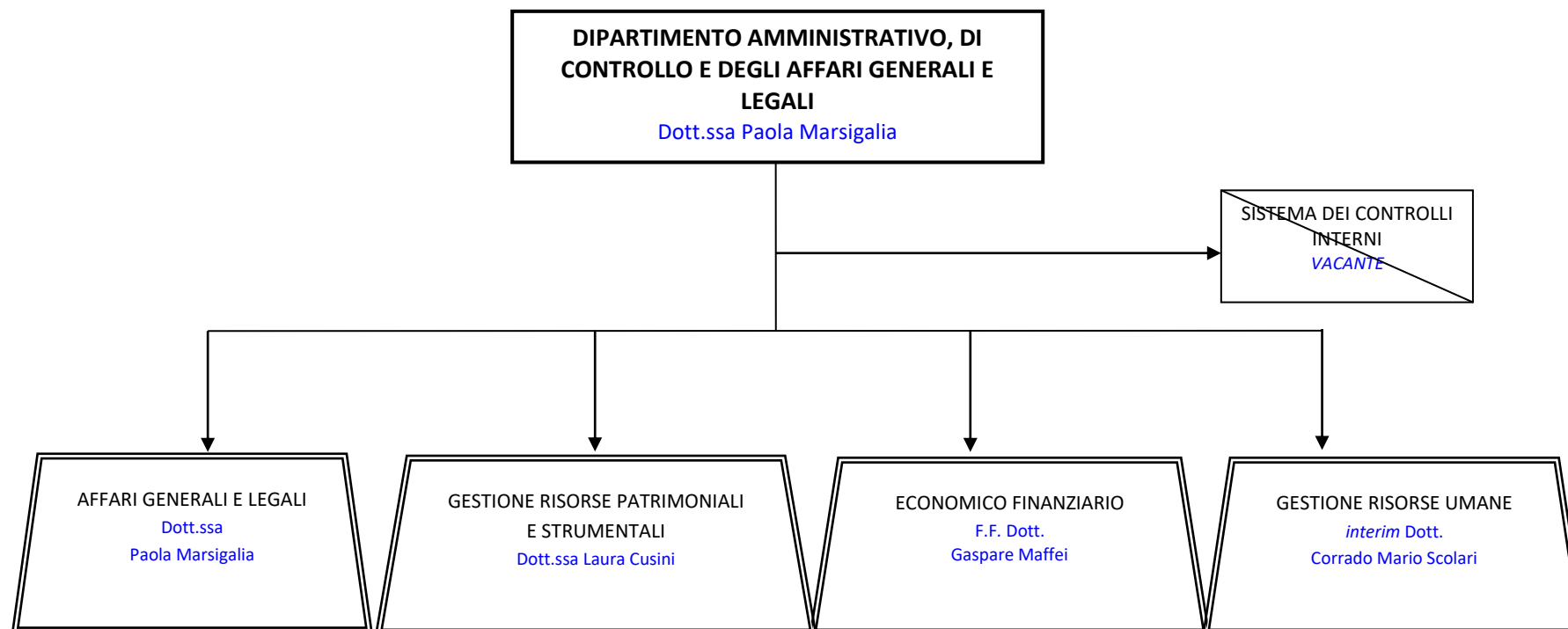


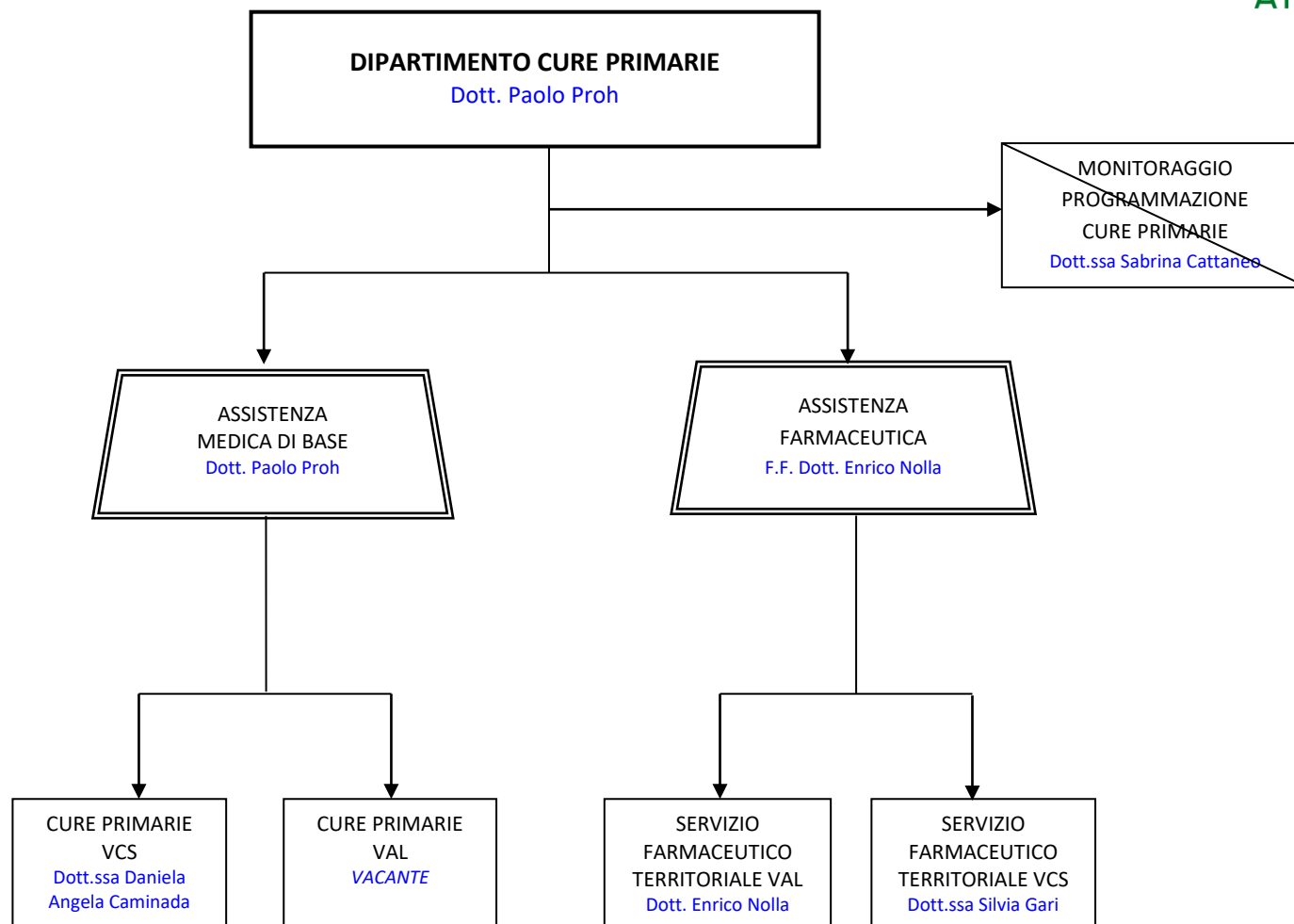
Direzioni e Dipartimenti

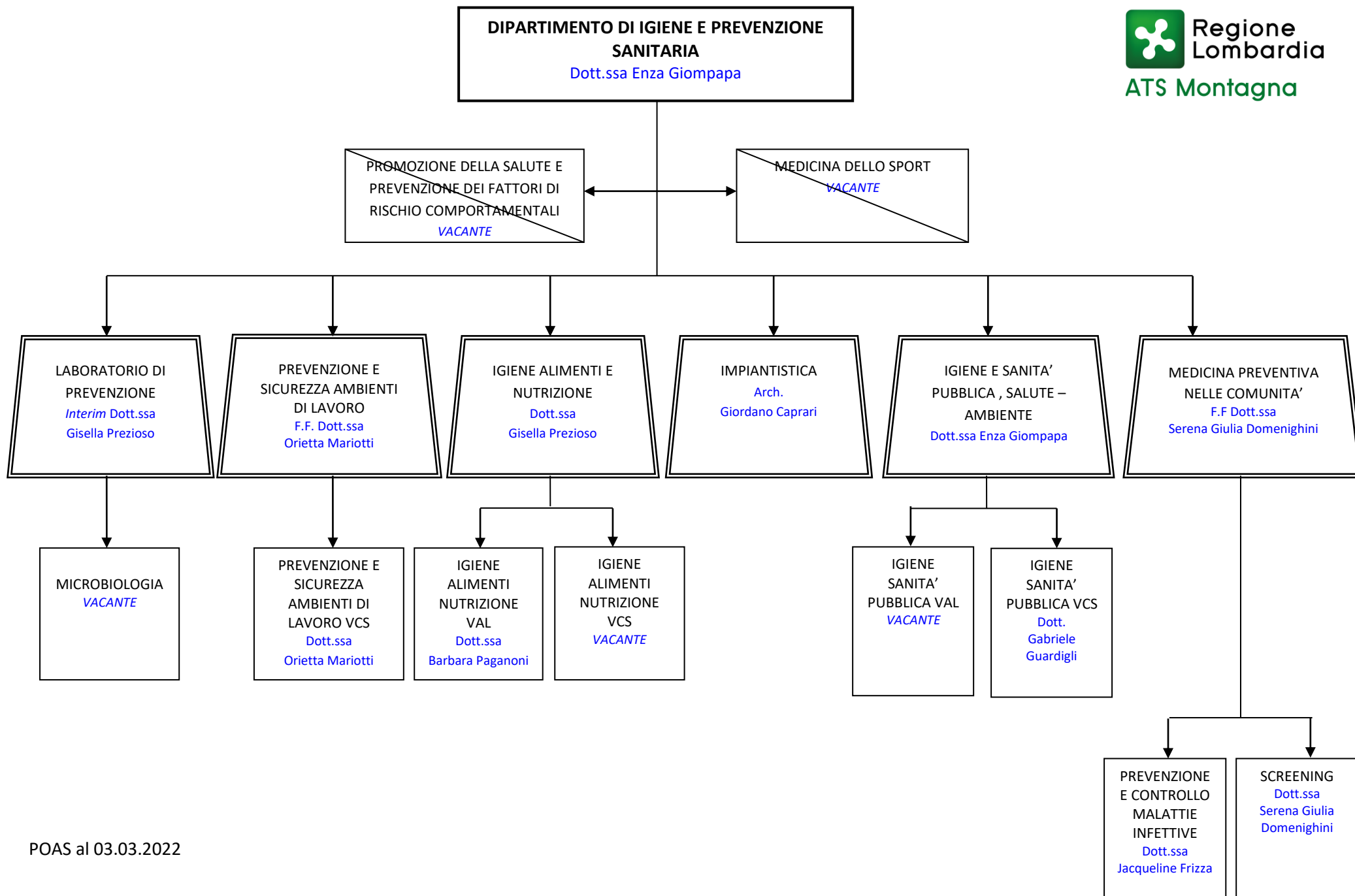












**DIPARTIMENTO VETERINARIO E SICUREZZA
DEGLI ALIMENTI DI ORIGINE ANIMALE**

Dott. Marco Marchetti

**AREA COORDINAMENTO TERRITORIALE
VALLECAMONICA-SEBINO**

Dott. Lucio Turetti

SANITA' PUBBLICA
VETERINARIA VCS
Dott.
Alessandro Massone

DISTRETTO
VETERINARIO VCS
Dott. Lucio Turetti

SANITA' ANIMALE
(AREA A)
Dott. Fabio Orsi

IGIENE DELLA PRODUZIONE,
TRASFORMAZIONE,
COMMERCIALIZZAZIONE,
CONSERVAZIONE E TRASPORTO
DEGLI ALIMENTI DI ORIGINE
ANIMALE (AREA B)
Dott. Marco Marchetti

IGIENE DEGLI
ALLEVAMENTI E DELLE
PRODUZIONI
ZOOTECNICHE (AREA C)
Dott. Oreste Zecca

AREA A VCS
Dott.
Alessandro
Eterovich

AREA B VCS
Dott.ssa
Marianna Parisi

AREA C VCS
Dott.
Francesco
Di Leo

~~DISTRETTO
VETERINARIO
EST VALT
Dott.
Nicola Martinelli~~

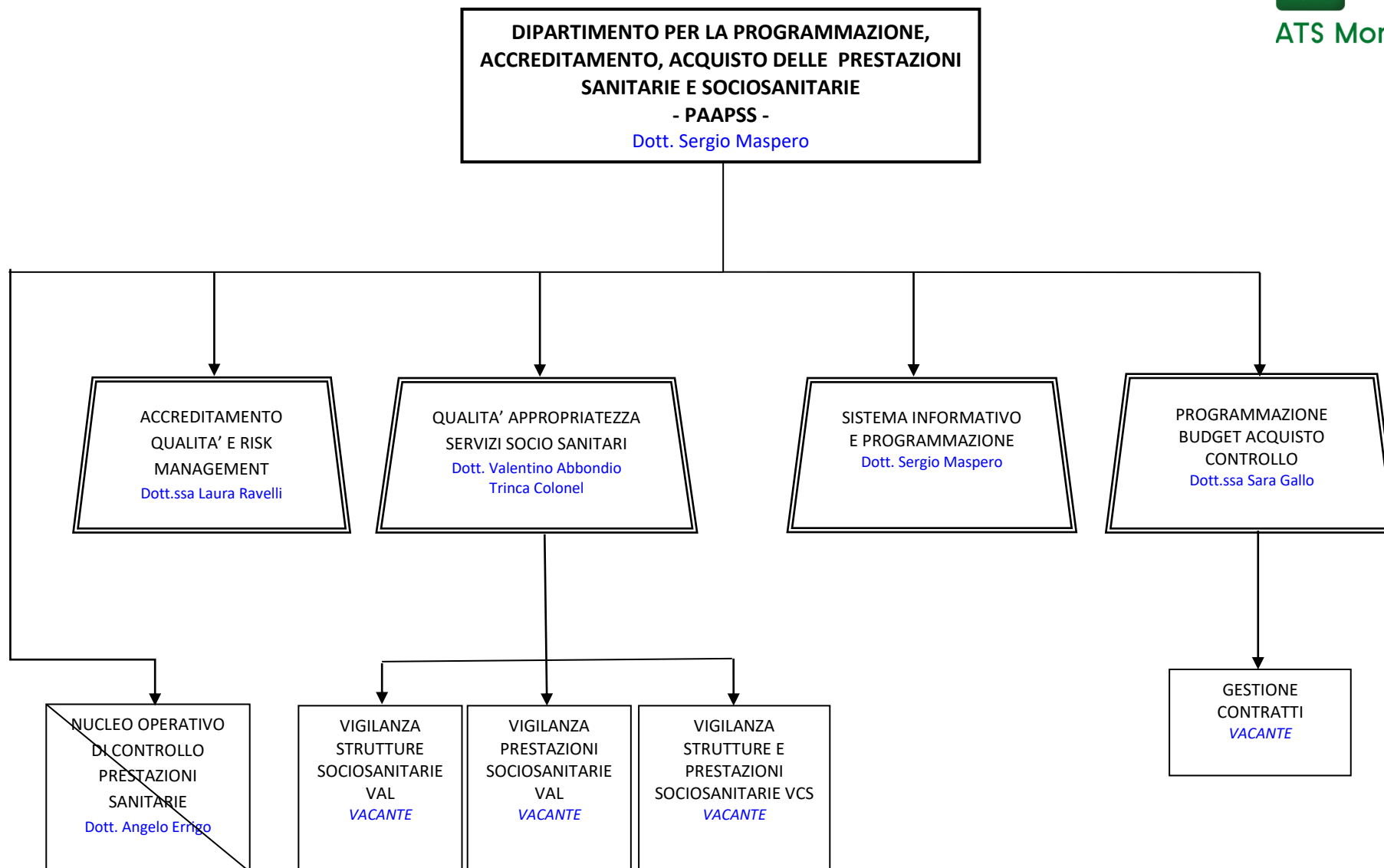
~~DISTRETTO
VETERINARIO
CENTRO VALT
Dott.ssa Silvia Fiorina
*nelle more
dell'assegnazione*~~

~~DISTRETTO
VETERINARIO
OVEST VALT
Dott.
Walter Acquistapace~~

~~DISTRETTO
VETERINARIO
ALTO LARIO
Dott.
Massimo Campagnani~~

~~FILIERA
ALIMENTARE
Dott.
Massimo Battistessa~~

~~IGIENE URBANA
Dott.ssa
Silvia Fiorina~~



**DIPARTIMENTO DELLA PROGRAMMAZIONE
PER L'INTEGRAZIONE DELLE PRESTAZIONI
SOCIOSANITARIE CON QUELLE SOCIALI**
- PIPSS-
Interim Dott. Franco Milani

Sistema Socio Sanitario



Regione
Lombardia

ATS Montagna

