


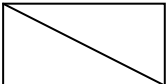
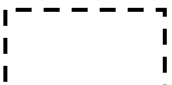

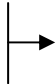
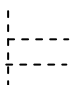
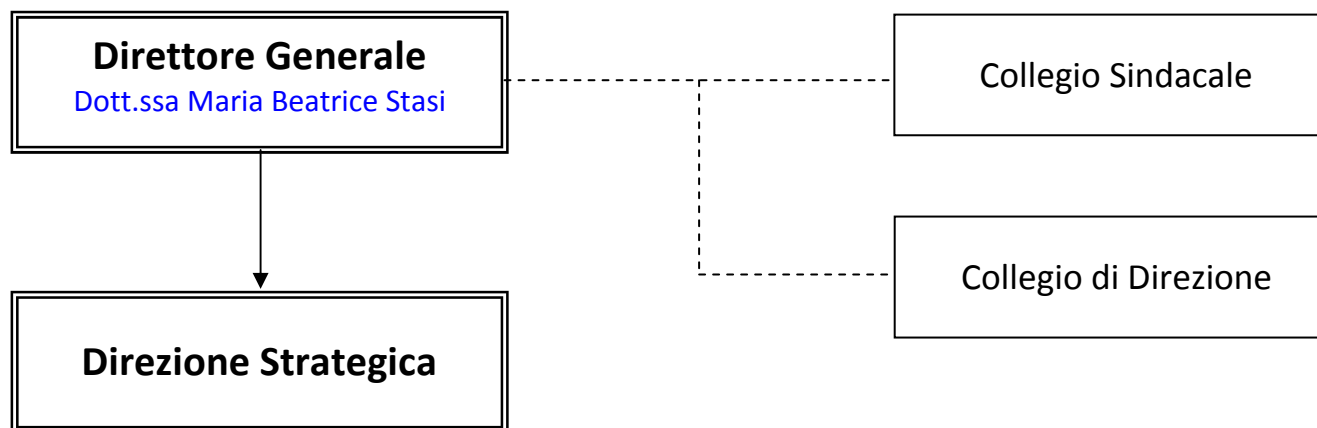
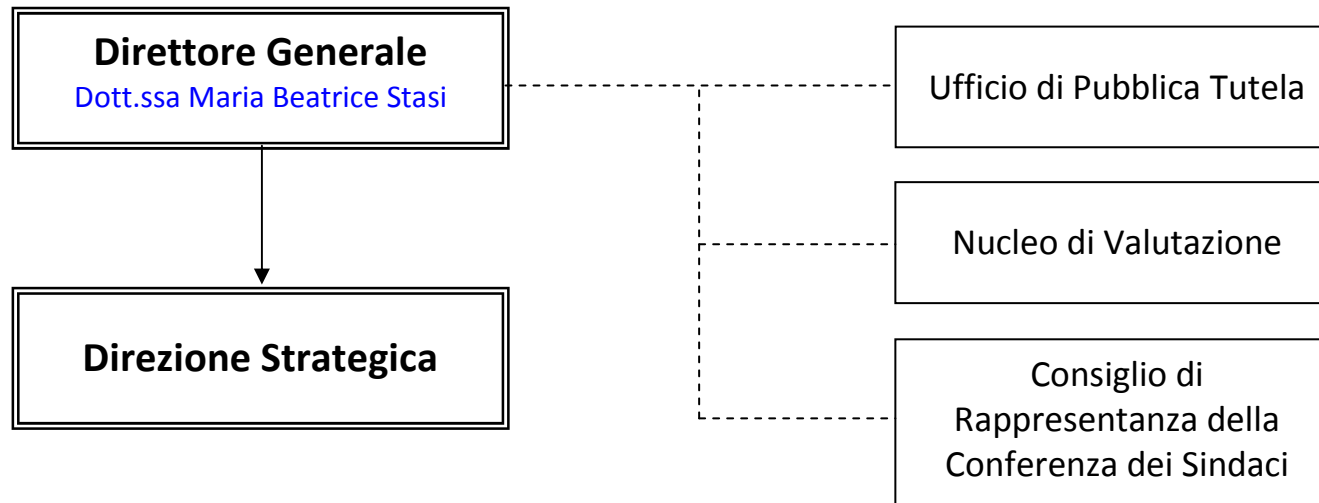


Legenda Strutture	
	Dipartimenti Gestionali
	Strutture complesse
	Strutture semplici
	Strutture semplici dipartimentali
	Dipartimenti funzionali
Legenda Relazioni	
	Dipendenza gerarchica
	Staff di una direzione
	Relazioni dipartimenti funzionali
Acronimi utilizzati:	
VAL= Valtellina Alto Lario VCS=Valcamonica MAL Medio Alto Lario VALT= Valtellina	

Organi Aziendali



Organismi Aziendali

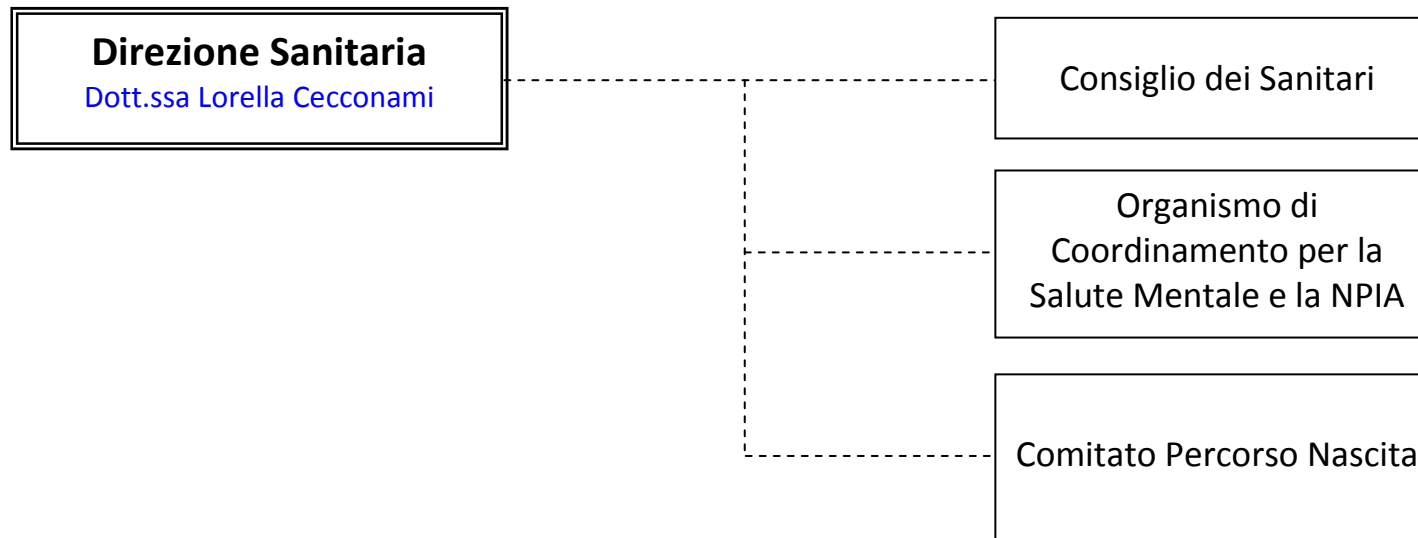


Organismi Aziendali

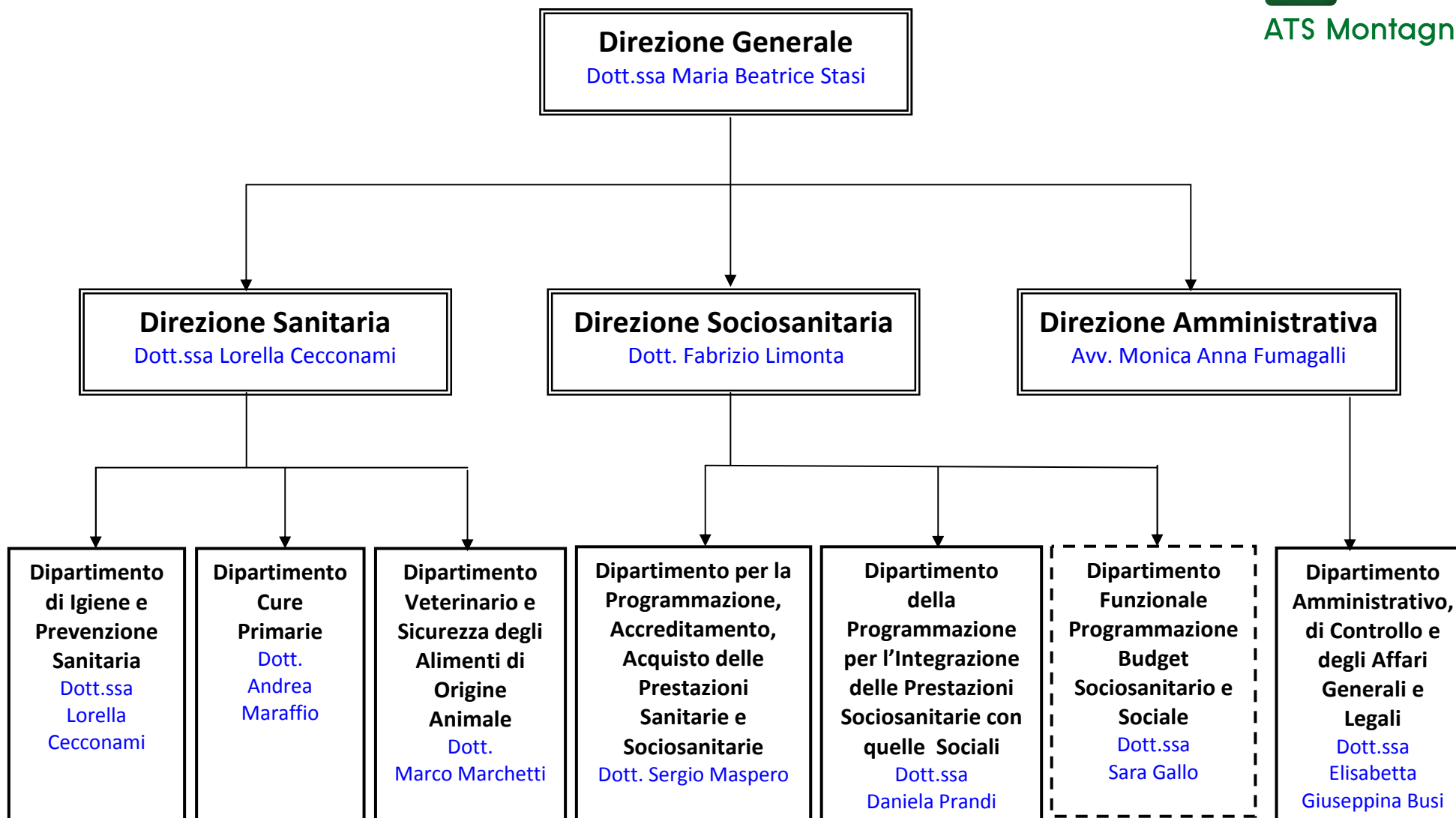
Sistema Socio Sanitario

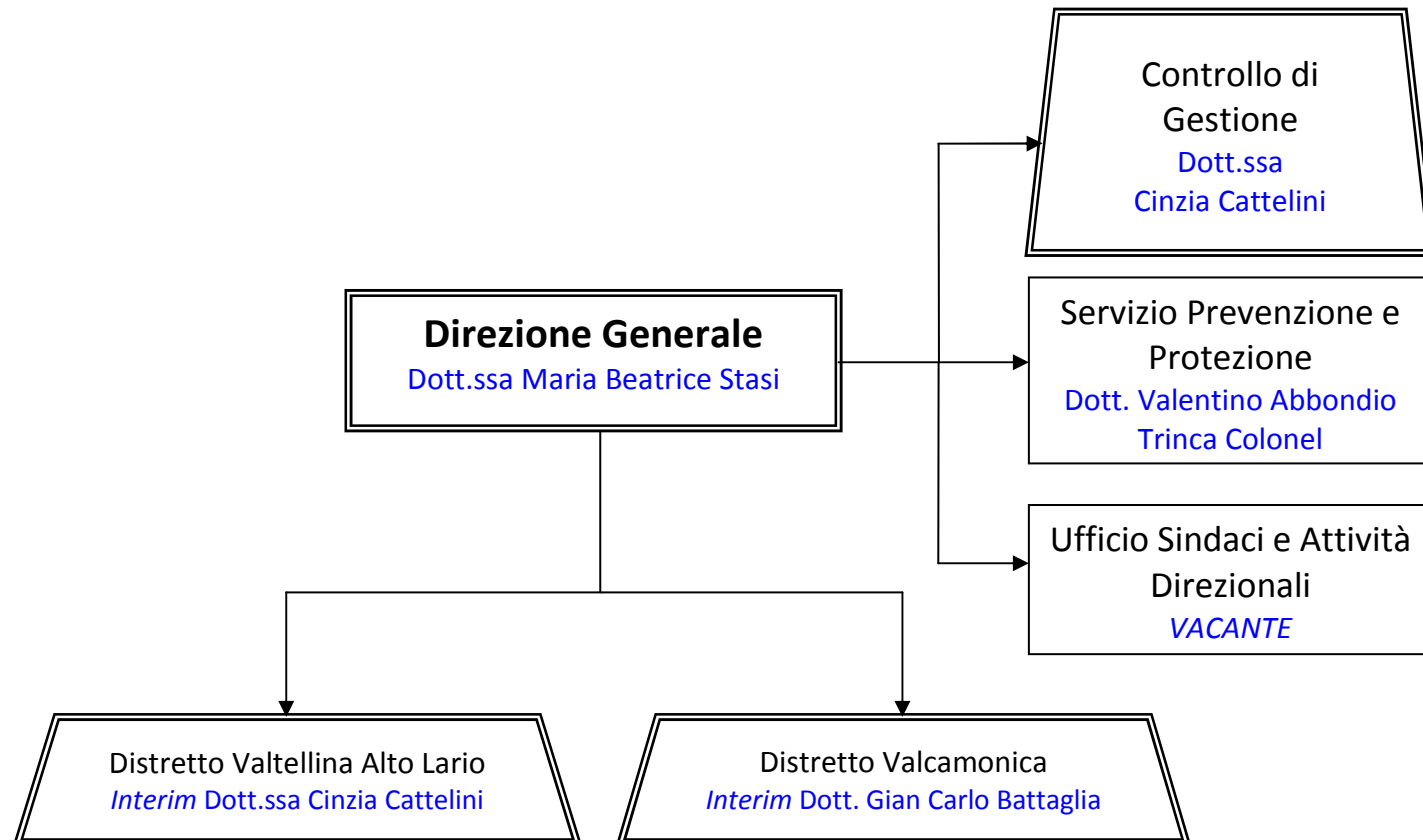


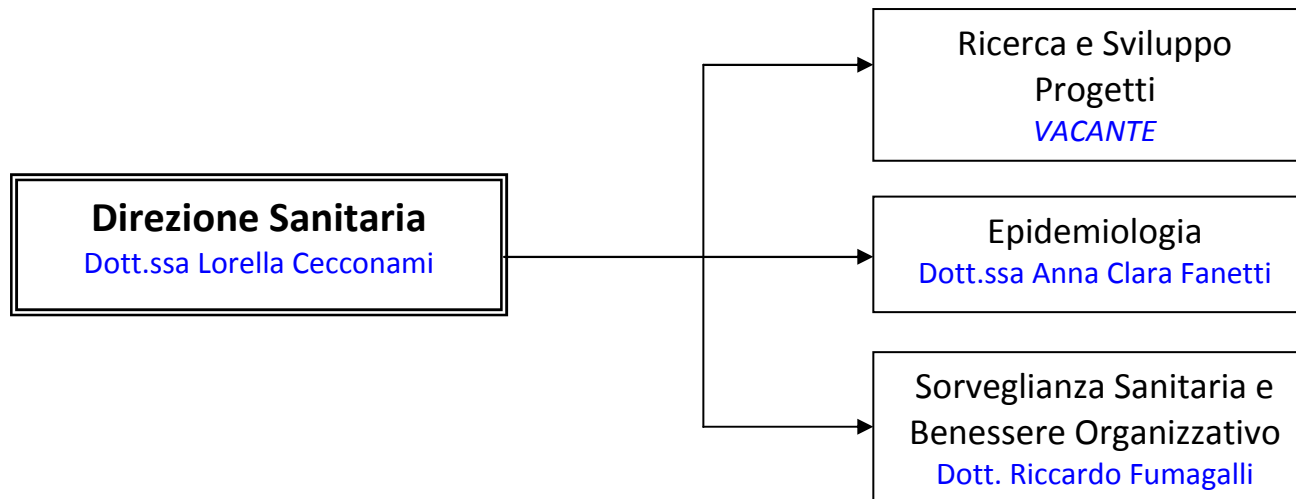
ATS Montagna

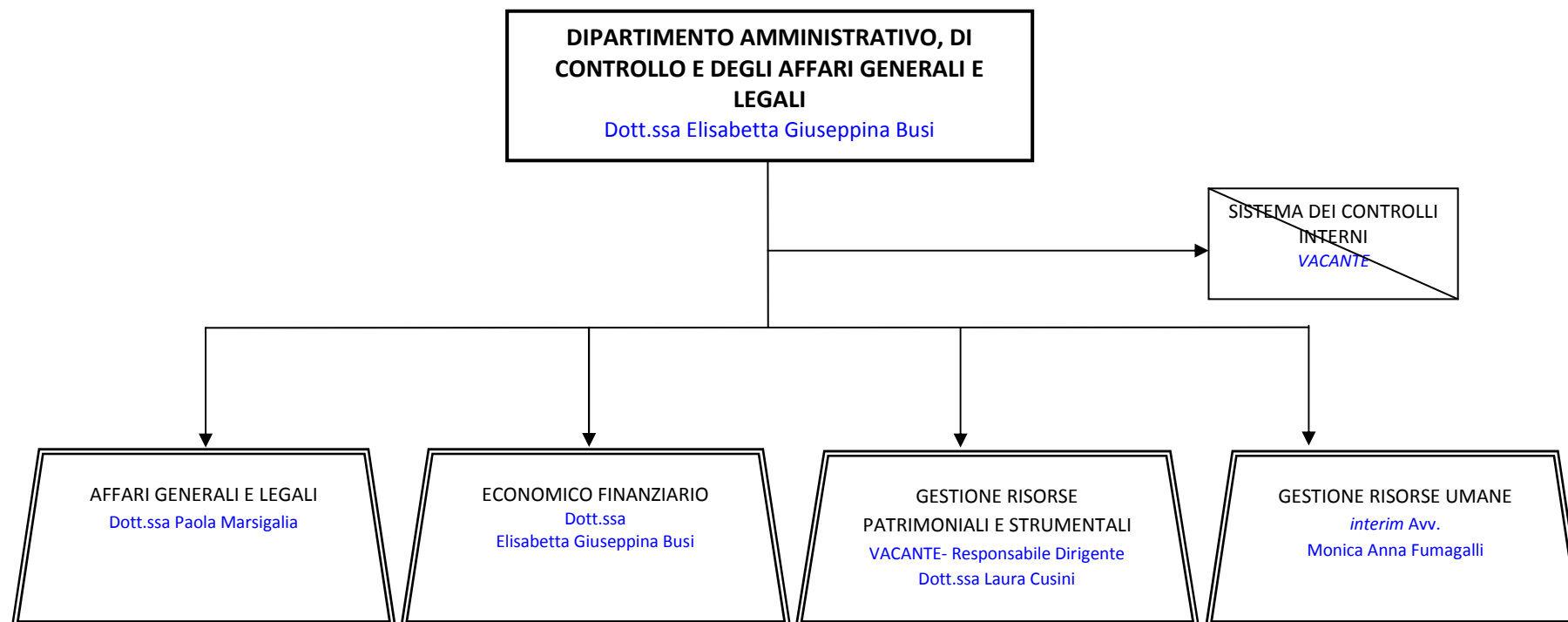


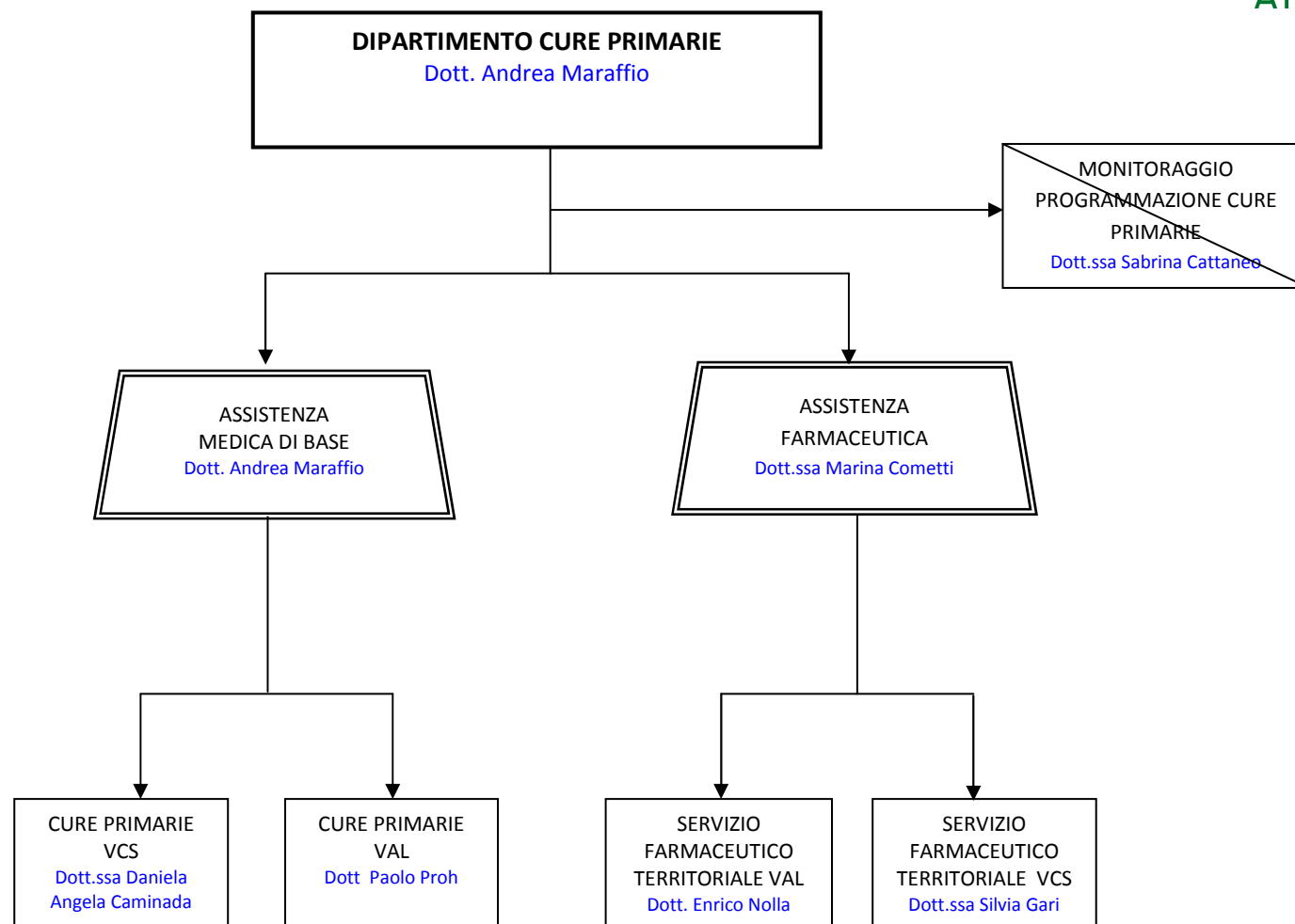
Direzioni e Dipartimenti

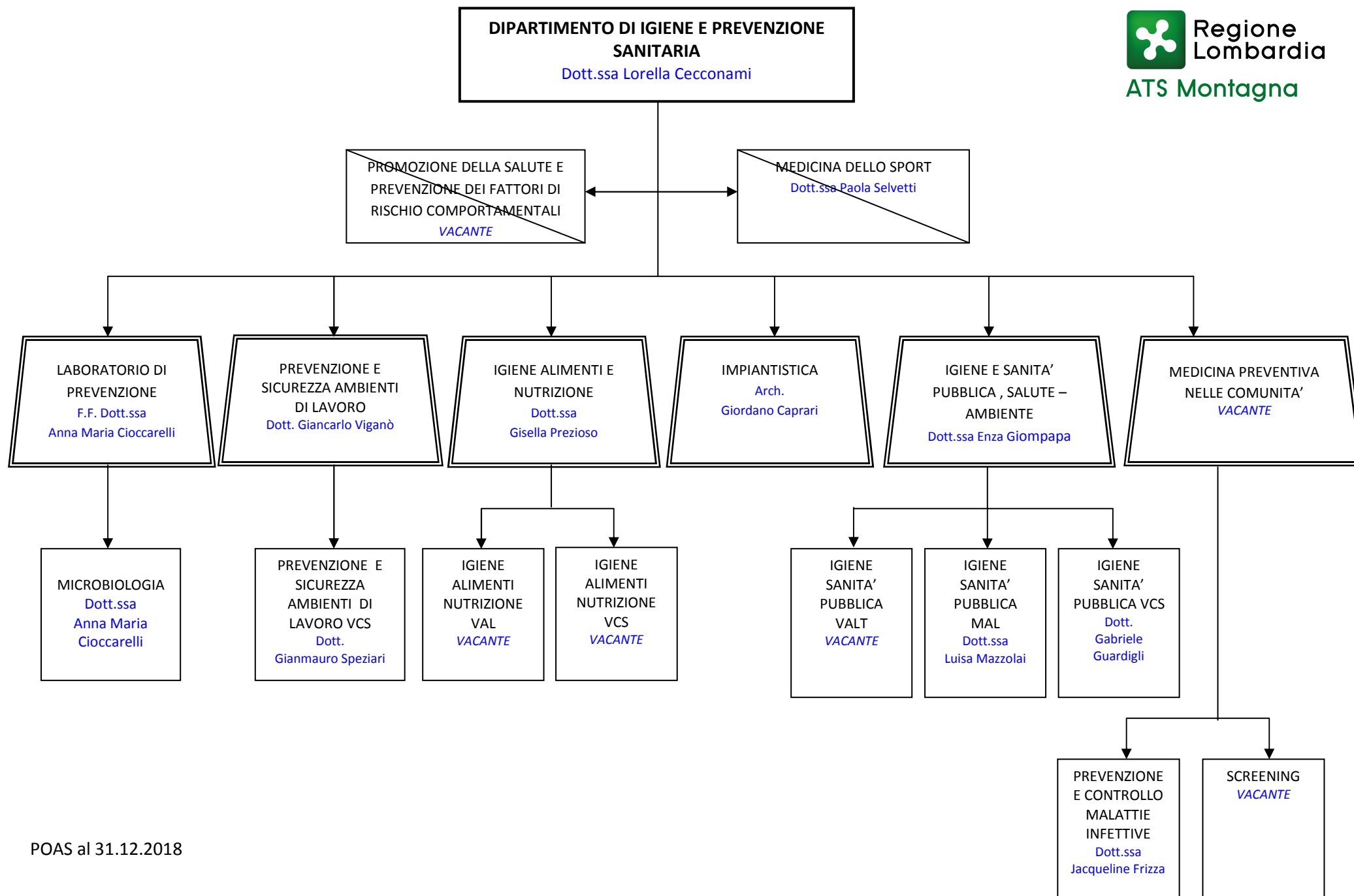


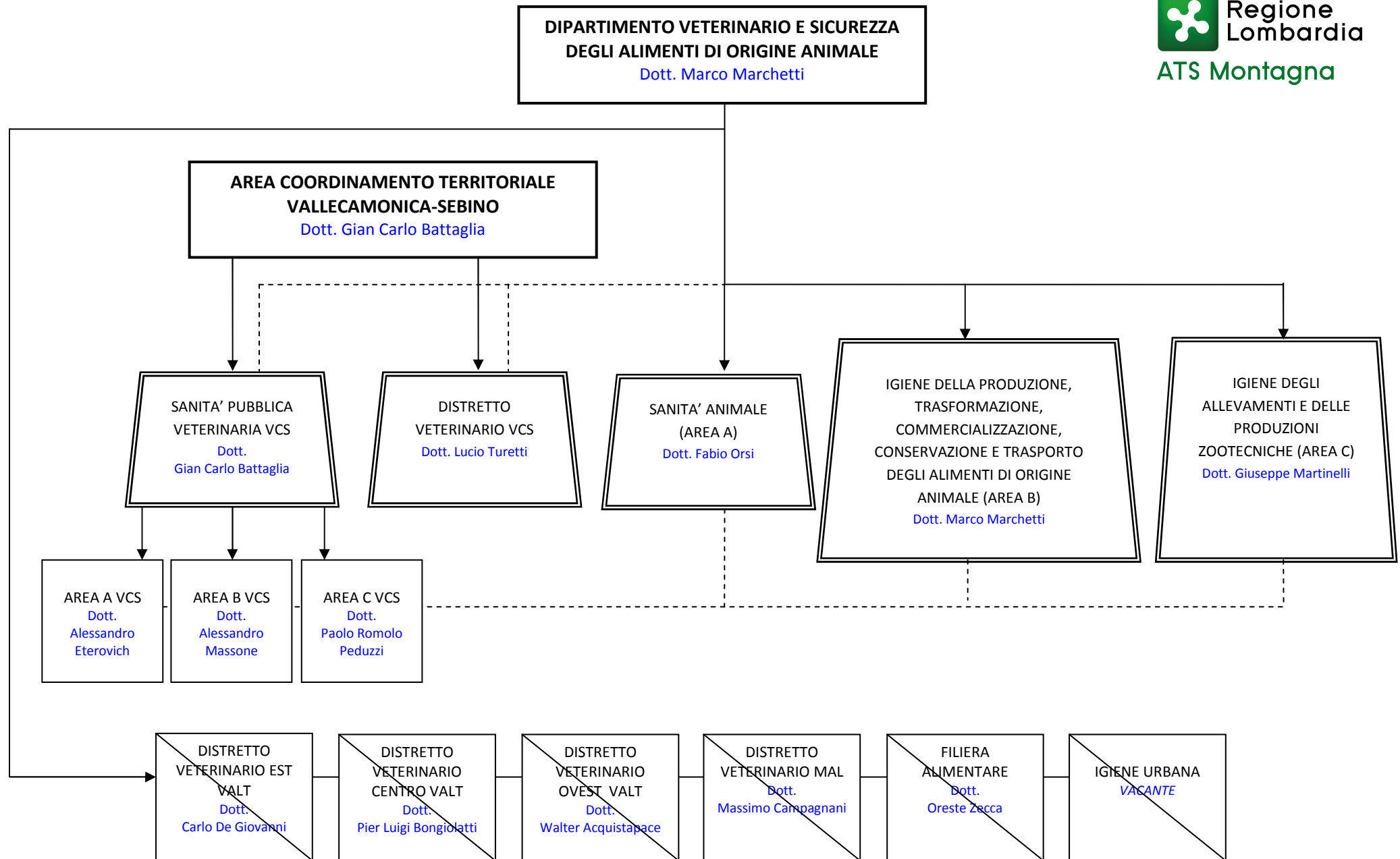












**DIPARTIMENTO PER LA PROGRAMMAZIONE,
ACCREDITAMENTO, ACQUISTO DELLE PRESTAZIONI
SANITARIE E SOCIOSANITARIE**
Dott. Sergio Maspero

ACCREDITAMENTO
QUALITA' E RISK
MANAGEMENT
Dott.ssa Laura Ravelli

QUALITA'
APPROPRIATEZZA
SERVIZI SOCIO SANITARI
F.F. Dott. Santo D'Auria

SISTEMA INFORMATIVO
E PROGRAMMAZIONE
Dott. Sergio Maspero

PROGRAMMAZIONE
BUDGET ACQUISTO
CONTROLLO
Dott.ssa Sara Gallo

VIGILANZA
STRUTTURE
SOCIOSANITARIE
VAL
Dott.
Santo D'Auria

VIGILANZA
PRESTAZIONI
SOCIOSANITARIE
VAL
Dott.ssa
Eloisa Del Curto

GESTIONE
CONTRATTI
VACANTE

~~NUCLEO OPERATIVO
DI CONTROLLO
PRESTAZIONI
SANITARIE
Interim Dott.ssa
Laura Ravelli~~

VIGILANZA
STRUTTURE E
PRESTAZIONI
SOCIOSANITARIE VCS
Dott. Pierangelo Troletti

POAS al 31.12.2018

**DIPARTIMENTO DELLE PROGRAMMAZIONE
PER L'INTEGRAZIONE DELLE PRESTAZIONI
SOCIOSANITARIE CON QUELLE SOCIALI**
Dott.ssa Daniela Prandi

