

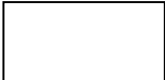
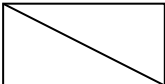


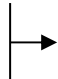
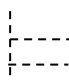
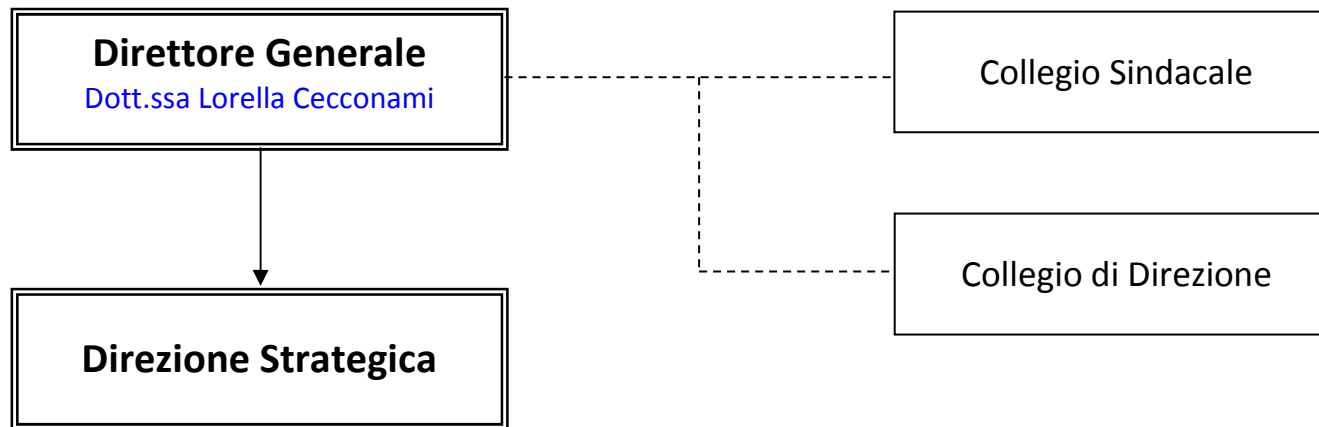
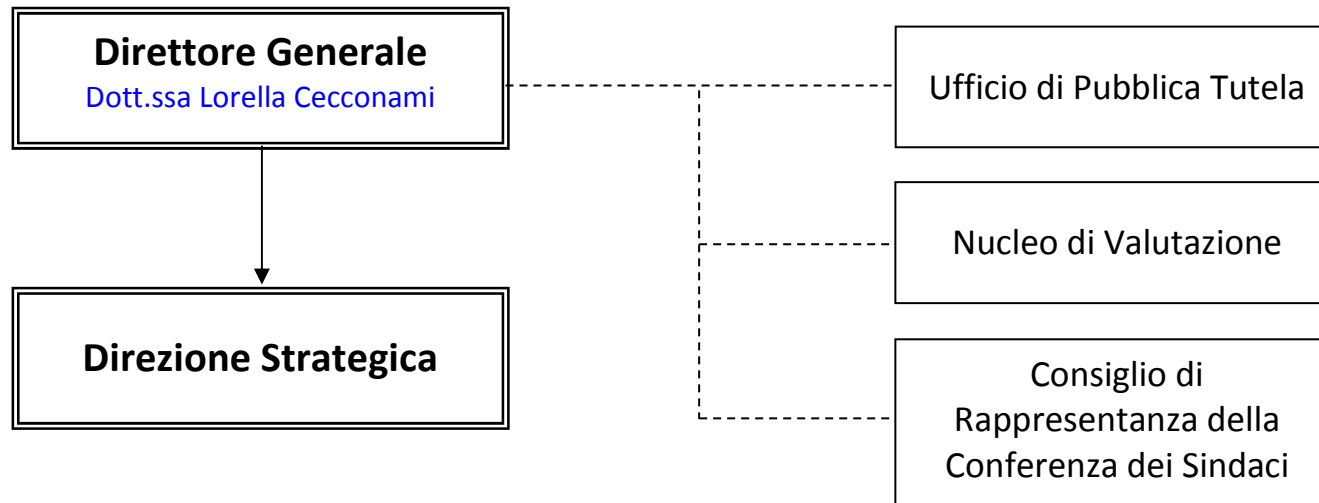


<b>Legenda Strutture</b>	
	<b>Dipartimenti Gestionali</b>
	<b>Strutture complesse</b>
	<b>Strutture semplici</b>
	<b>Strutture semplici dipartimentali</b>
	<b>Dipartimenti funzionali</b>
<b>Legenda Relazioni</b>	
	<b>Dipendenza gerarchica</b>
	<b>Staff di una direzione</b>
	<b>Relazioni dipartimenti funzionali</b>
<b>Acronimi utilizzati:</b>	
VAL= Valtellina Alto Lario    VCS=Valcamonica    ALTO LARIO = Alto Lario    VALT= Valtellina	

## Organi Aziendali



## Organismi Aziendali

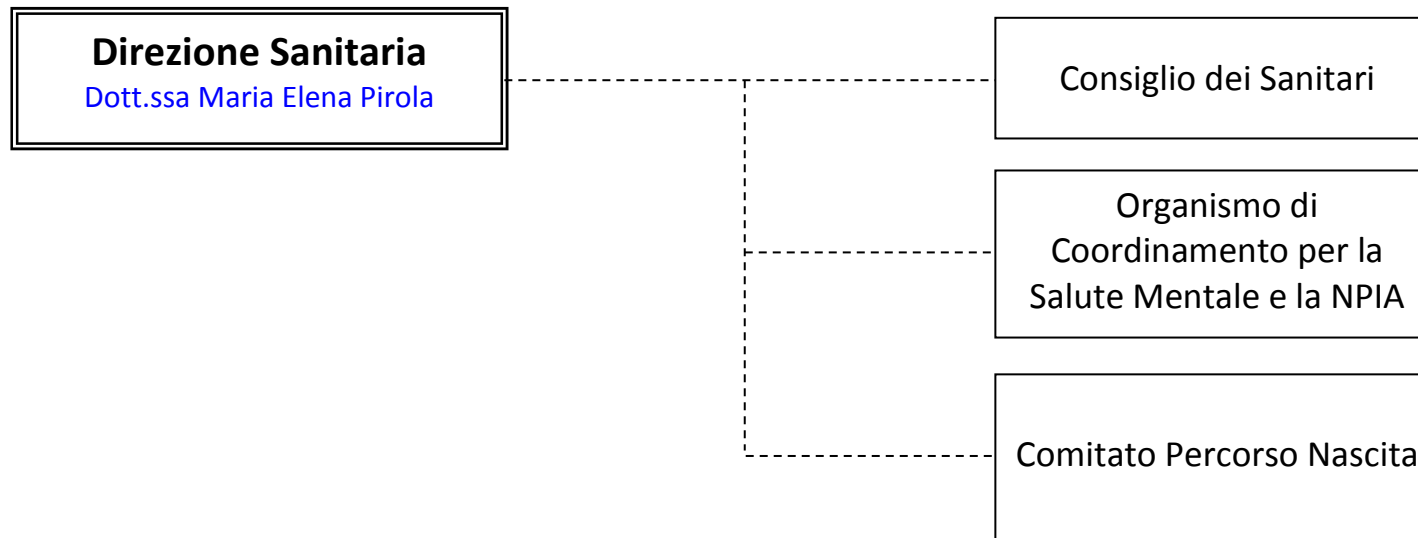


## Organismi Aziendali

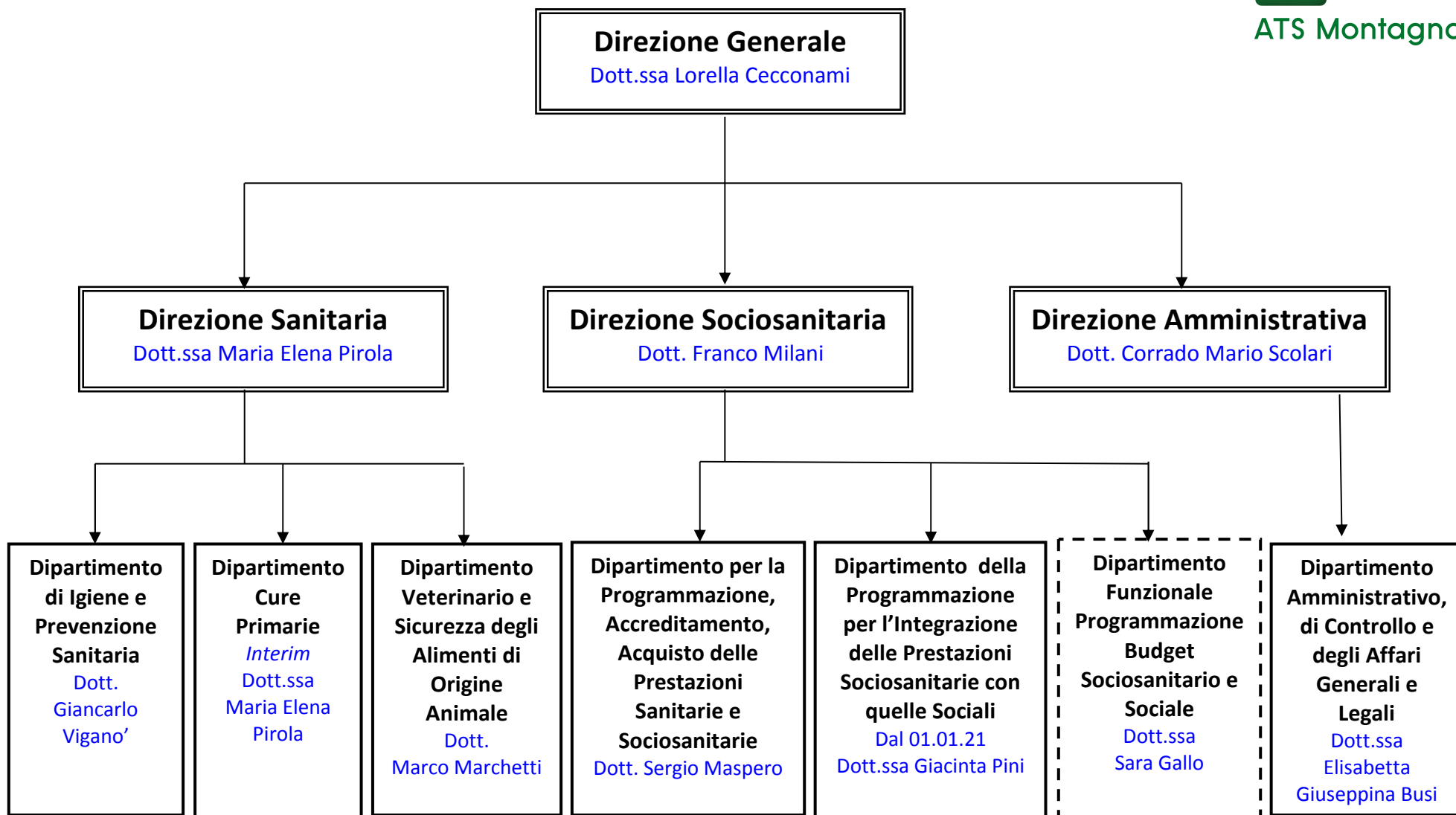
Sistema Socio Sanitario

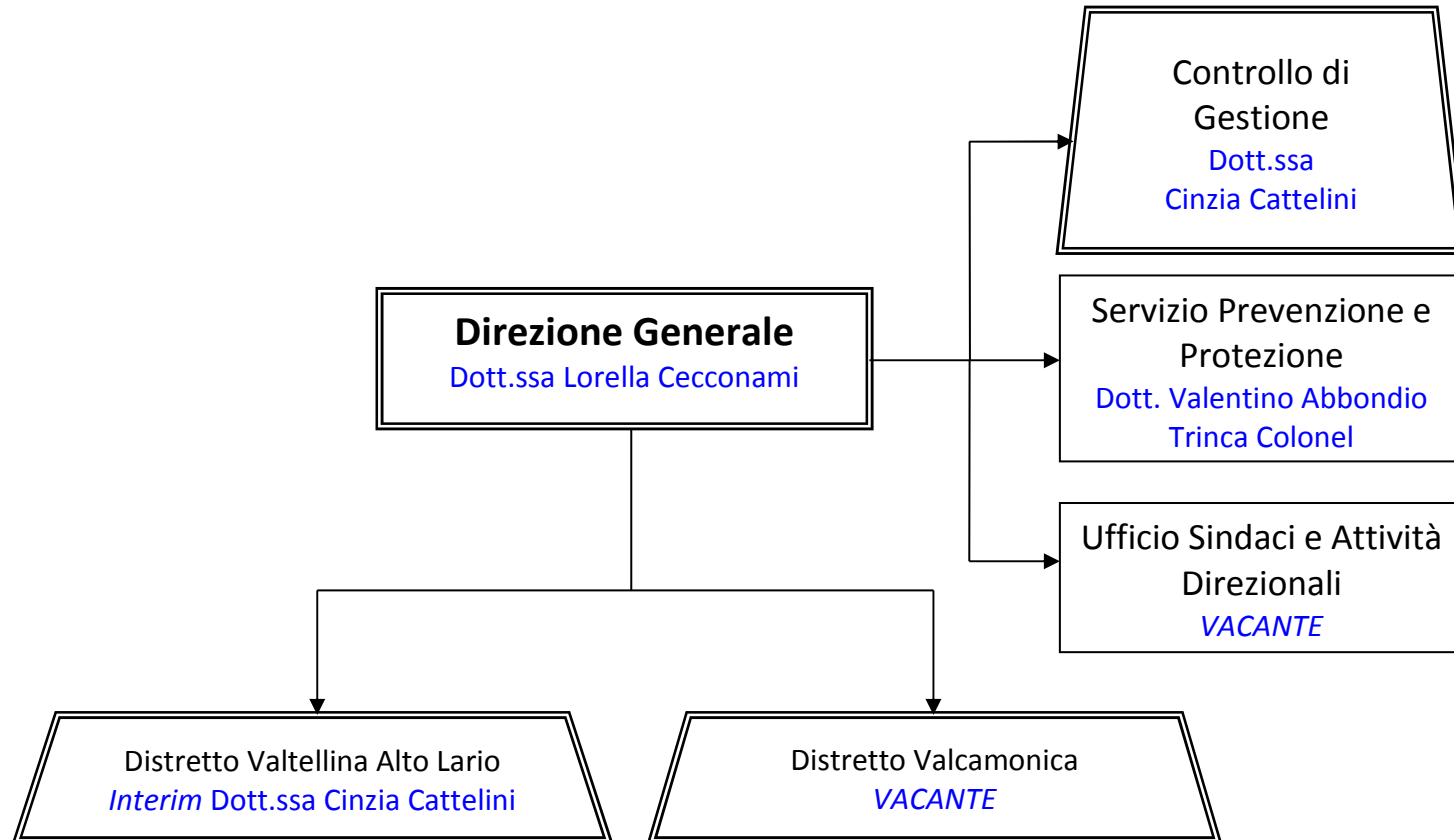


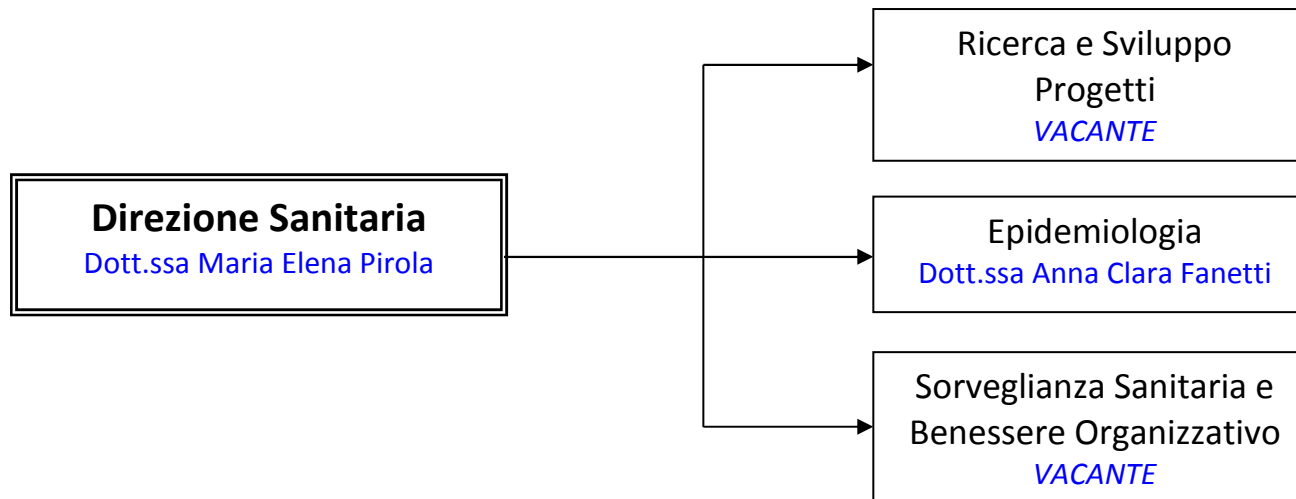
ATS Montagna

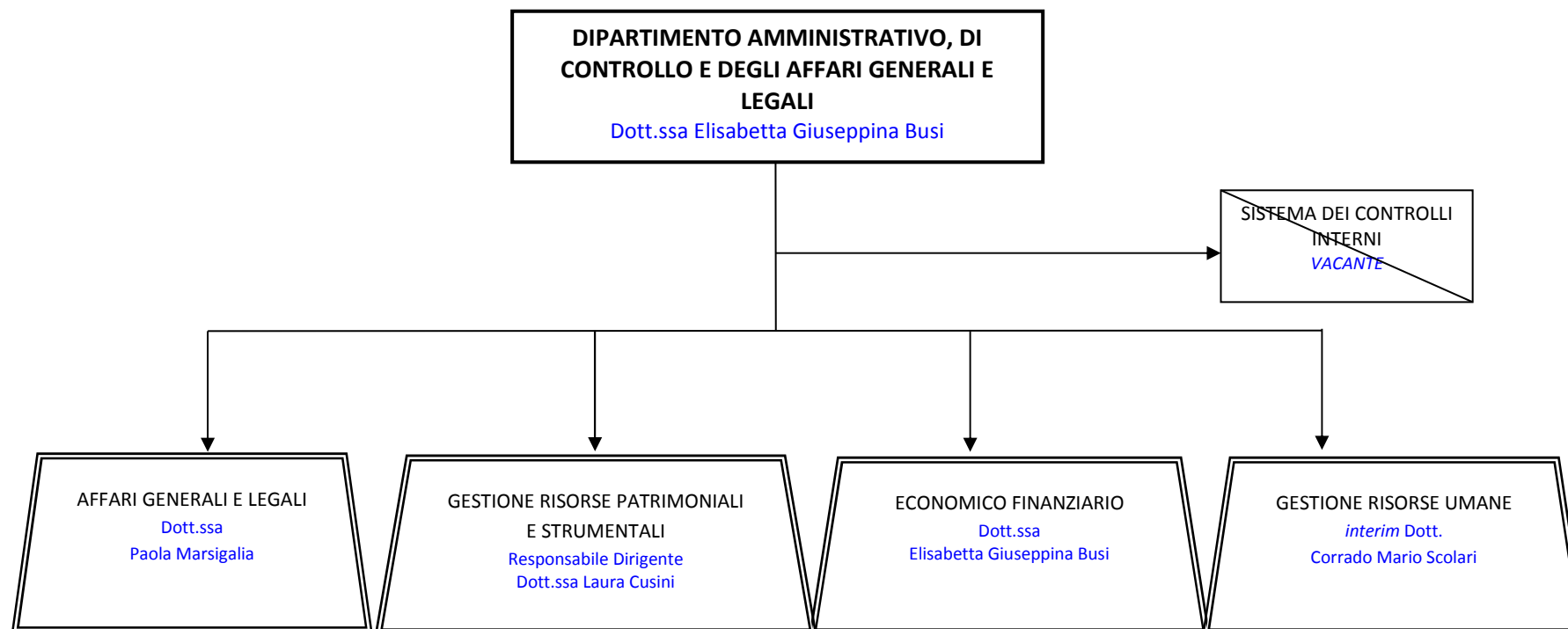


## Direzioni e Dipartimenti

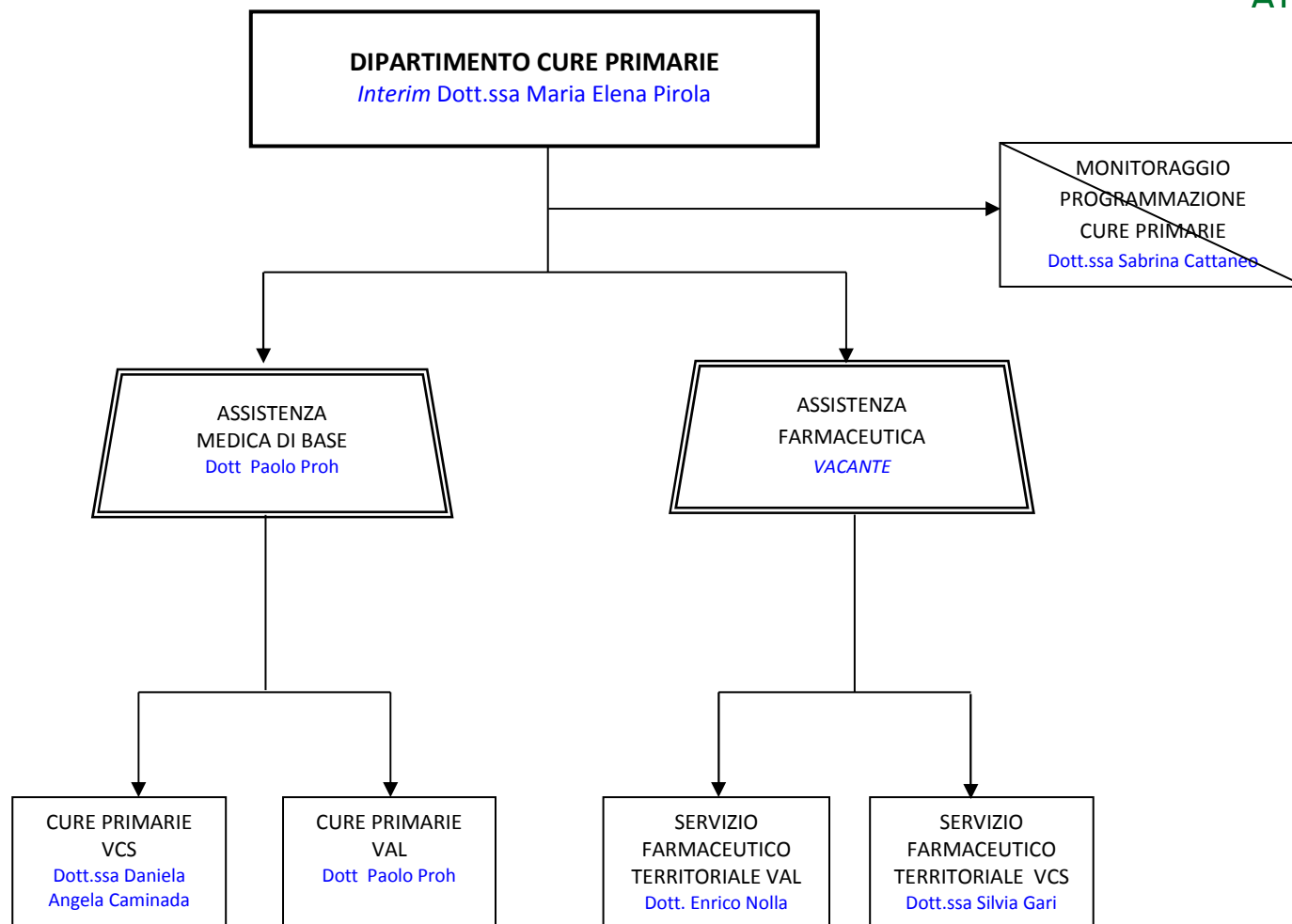


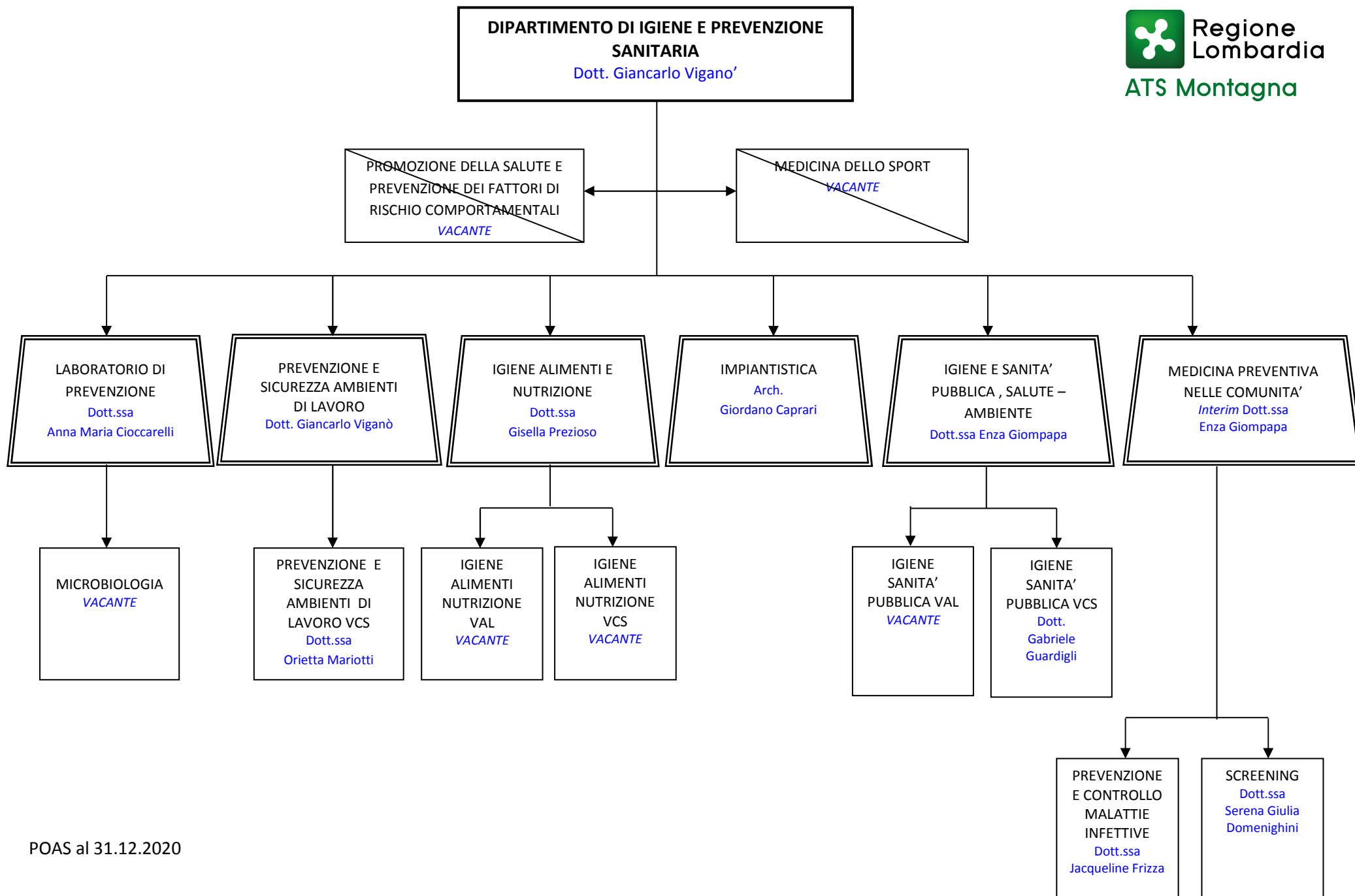


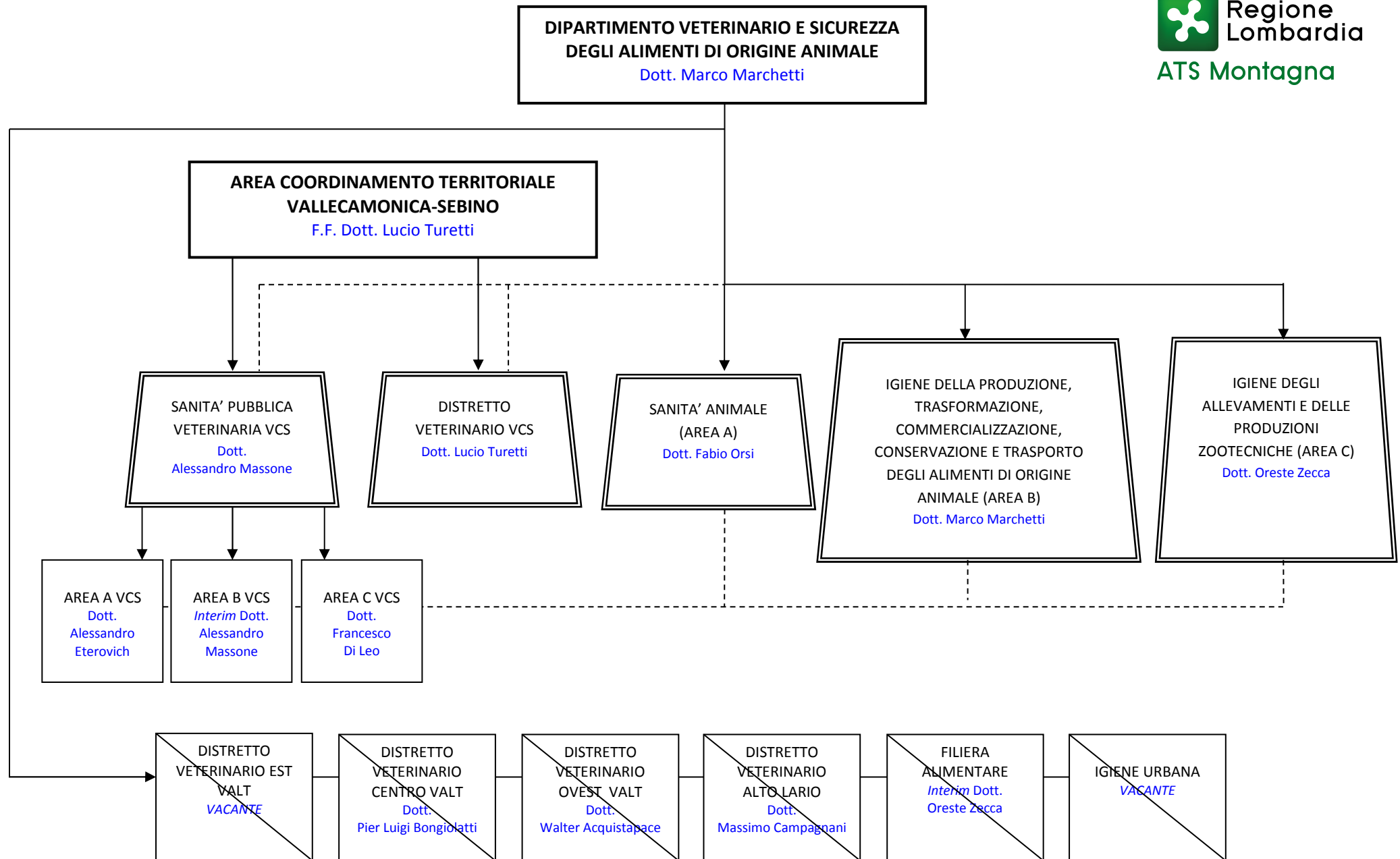












**DIPARTIMENTO PER LA PROGRAMMAZIONE,  
ACCREDITAMENTO, ACQUISTO DELLE PRESTAZIONI  
SANITARIE E SOCIOSANITARIE**  
Dott. Sergio Maspero

ACCREDITAMENTO  
QUALITA' E RISK  
MANAGEMENT  
Dott.ssa Laura Ravelli

QUALITA' APPROPRIATEZZA  
SERVIZI SOCIO SANITARI  
F.F. Dott. Valentino Abbondio  
Trinca Colonel

SISTEMA INFORMATIVO  
E PROGRAMMAZIONE  
Dott. Sergio Maspero

PROGRAMMAZIONE  
BUDGET ACQUISTO  
CONTROLLO  
Dott.ssa Sara Gallo

VIGILANZA  
STRUTTURE  
SOCIOSANITARIE  
VAL  
VACANTE

VIGILANZA  
PRESTAZIONI  
SOCIOSANITARIE  
VAL  
VACANTE

GESTIONE  
CONTRATTI  
VACANTE

~~NUCLEO OPERATIVO  
DI CONTROLLO  
PRESTAZIONI  
SANITARIE  
Dott. Angelo Errigo~~

VIGILANZA  
STRUTTURE E  
PRESTAZIONI  
SOCIOSANITARIE VCS  
VACANTE

POAS al 31.12.2020

**DIPARTIMENTO DELLA PROGRAMMAZIONE  
PER L'INTEGRAZIONE DELLE PRESTAZIONI  
SOCIOSANITARIE CON QUELLE SOCIALI**  
*Dal 01.01.21 Dott.ssa Giacinta Pini*

