

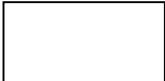
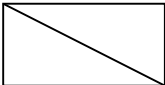



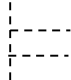
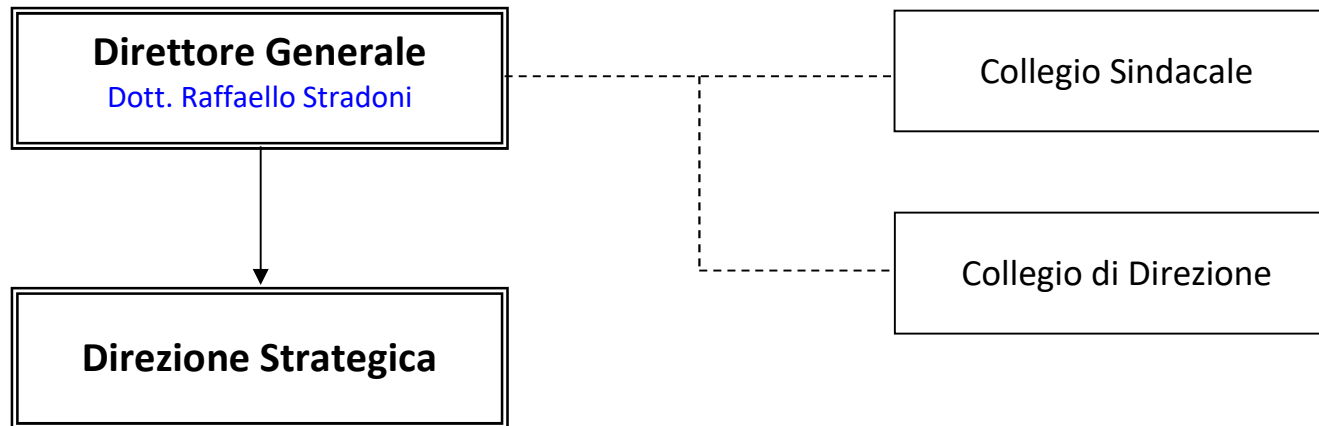
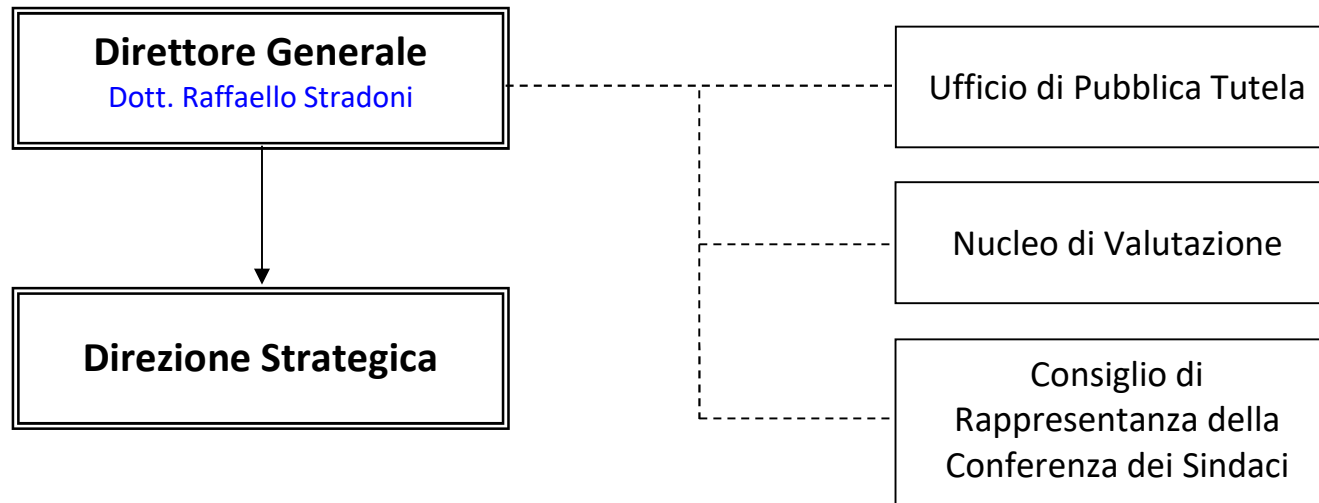


Legenda Strutture	
	Dipartimenti Gestionali
	Strutture complesse
	Strutture semplici
	Strutture semplici dipartimentali
	Dipartimenti funzionali
Legenda Relazioni	
	Dipendenza gerarchica
	Staff di una direzione
	Relazioni dipartimenti funzionali
Acronimi utilizzati:	
VAL= Valtellina Alto Lario VCS=Valcamonica ALTO LARIO = Alto Lario VALT= Valtellina	

Organi Aziendali



Organismi Aziendali

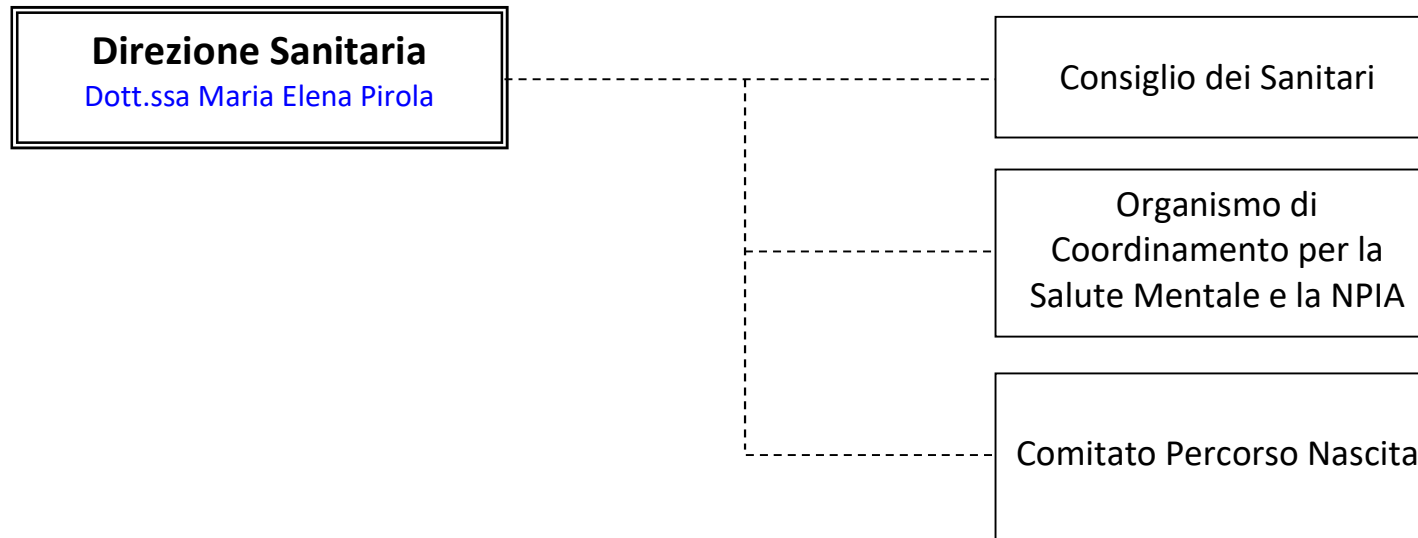


Organismi Aziendali

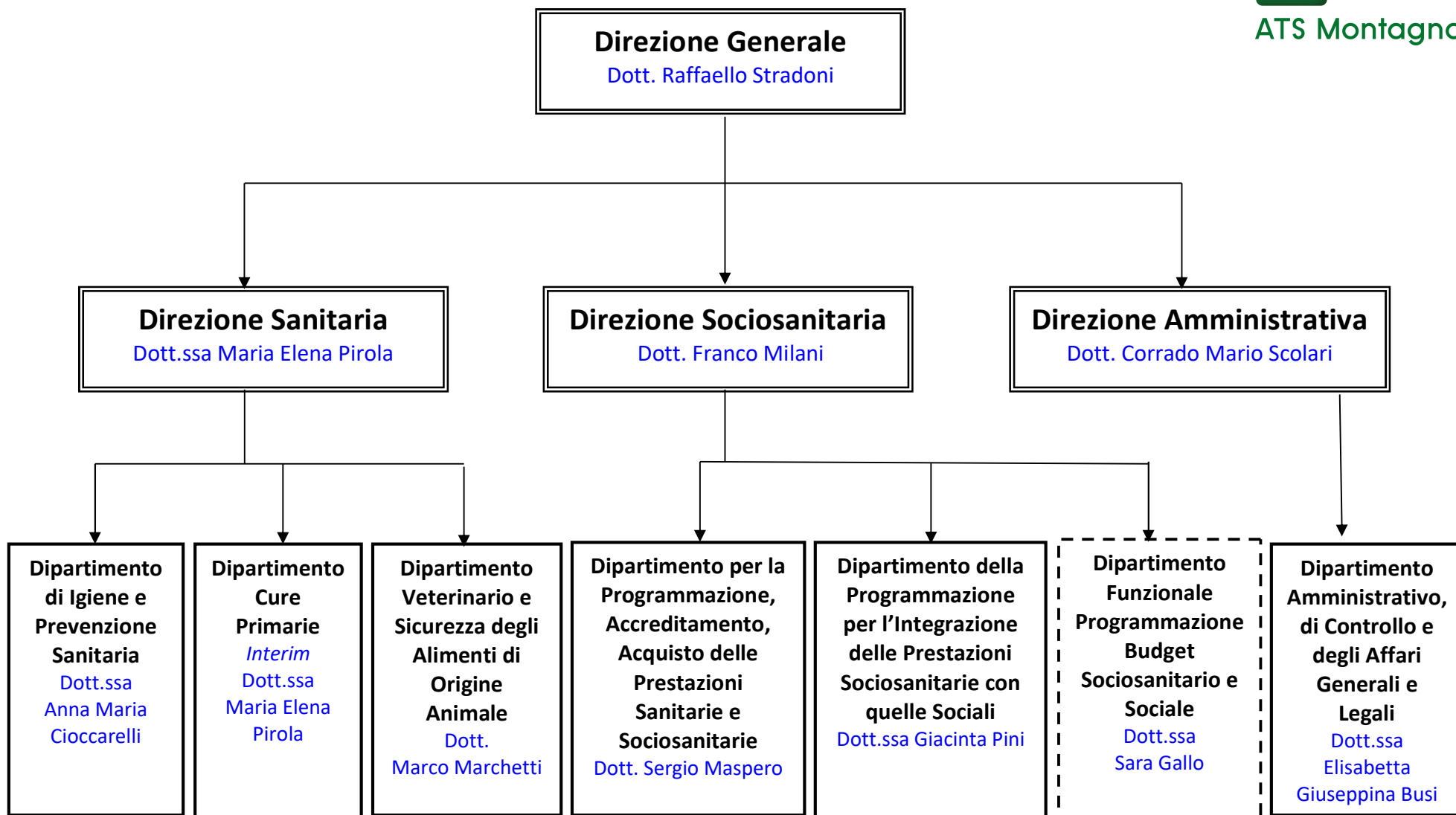
Sistema Socio Sanitario

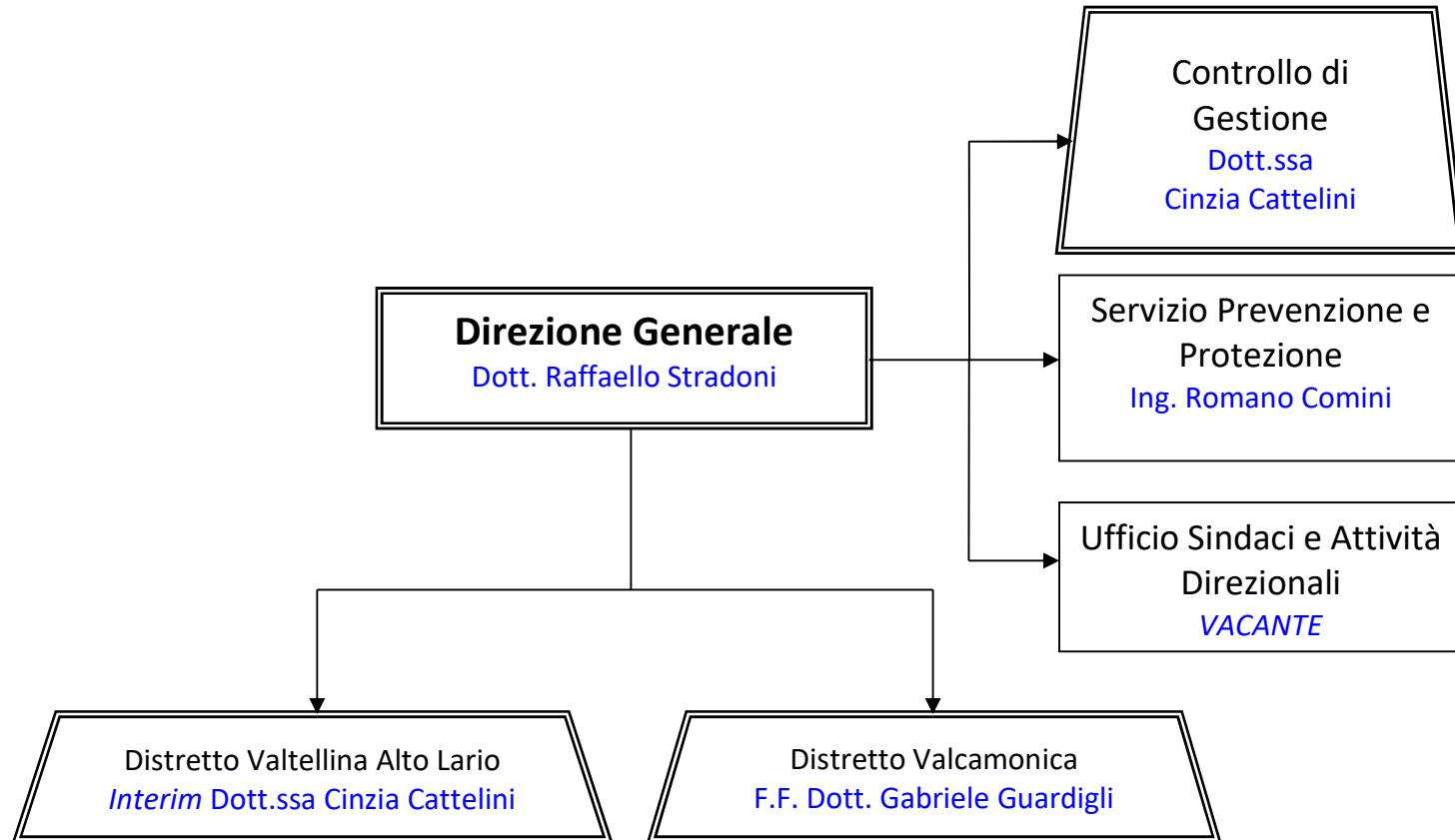


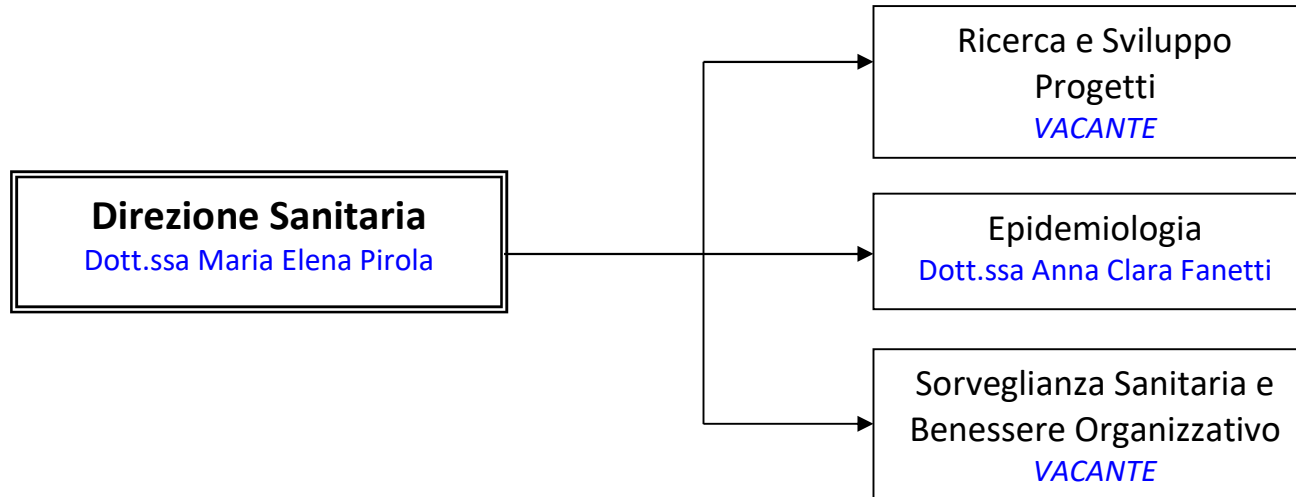
ATS Montagna

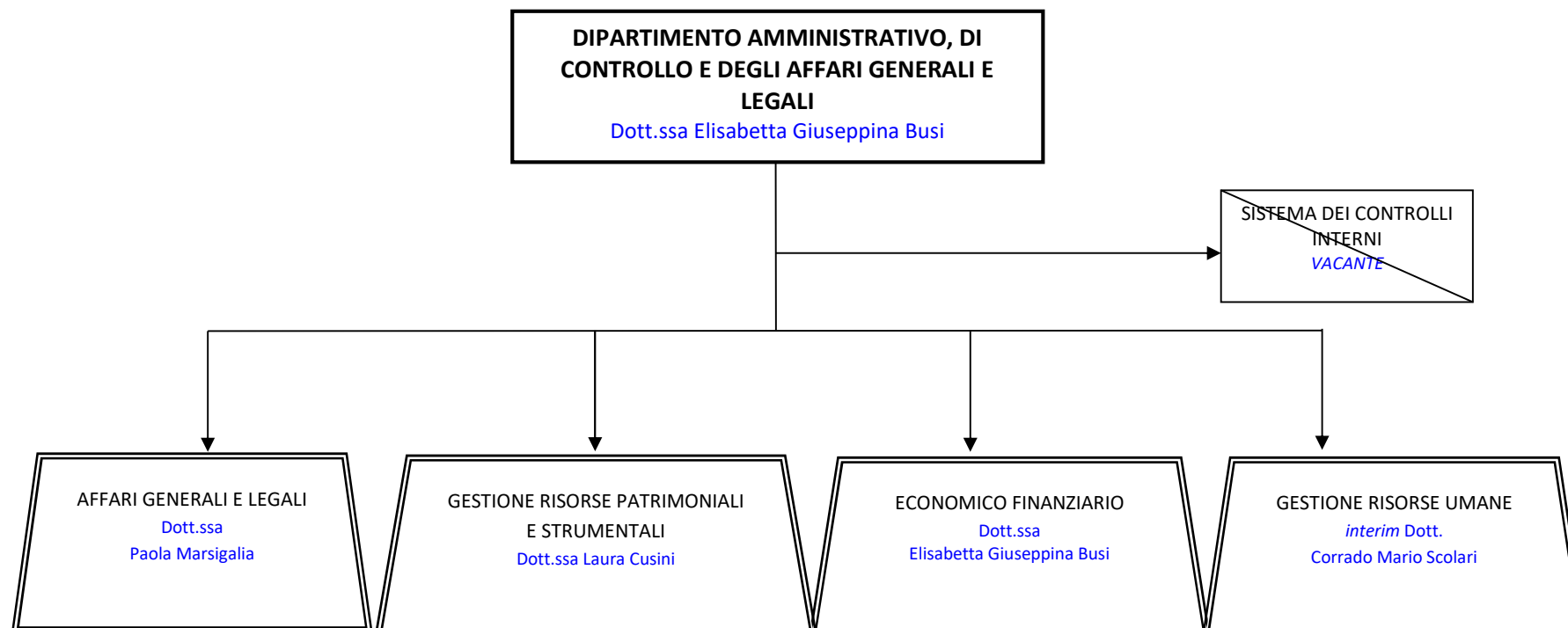


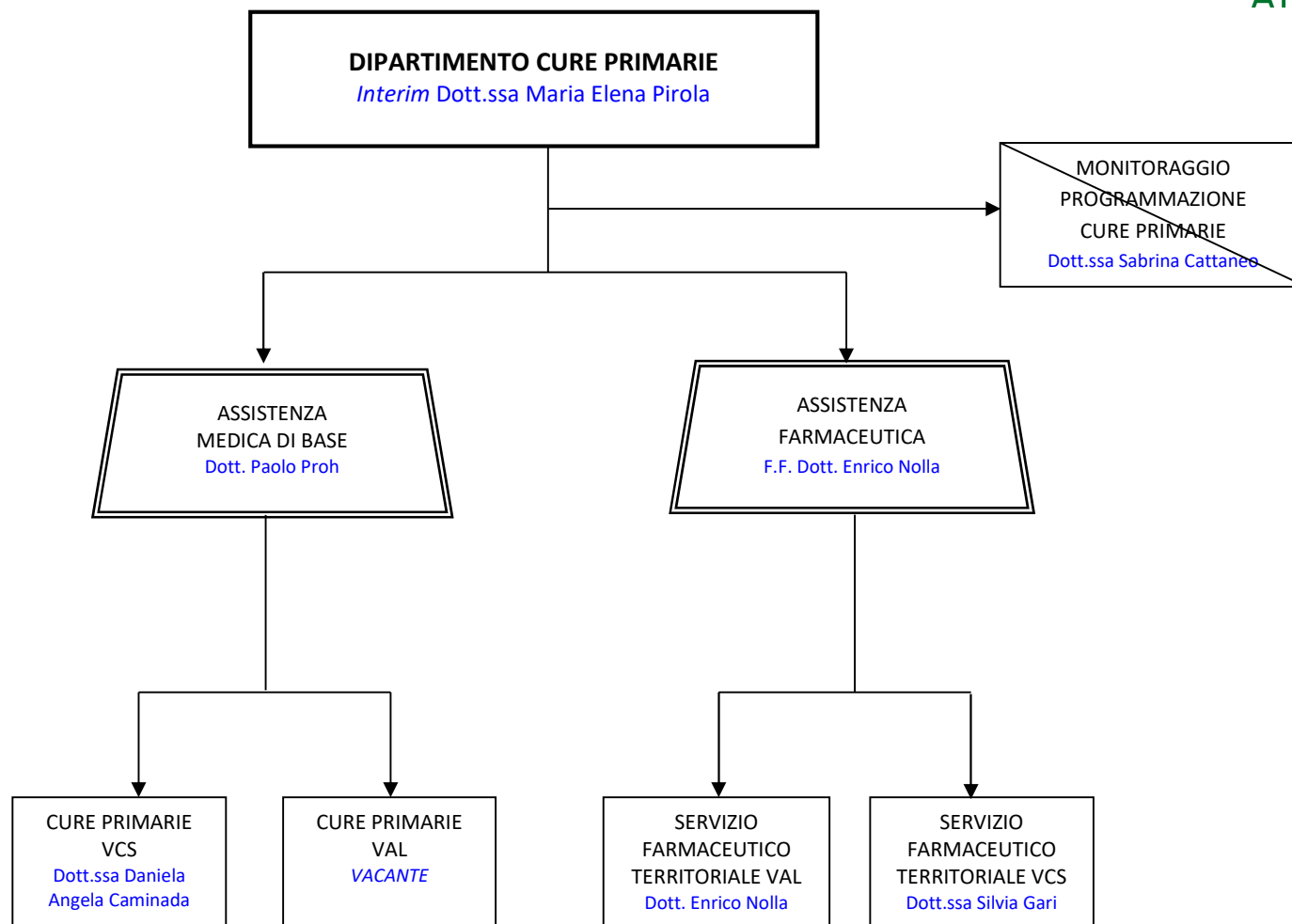
Direzioni e Dipartimenti

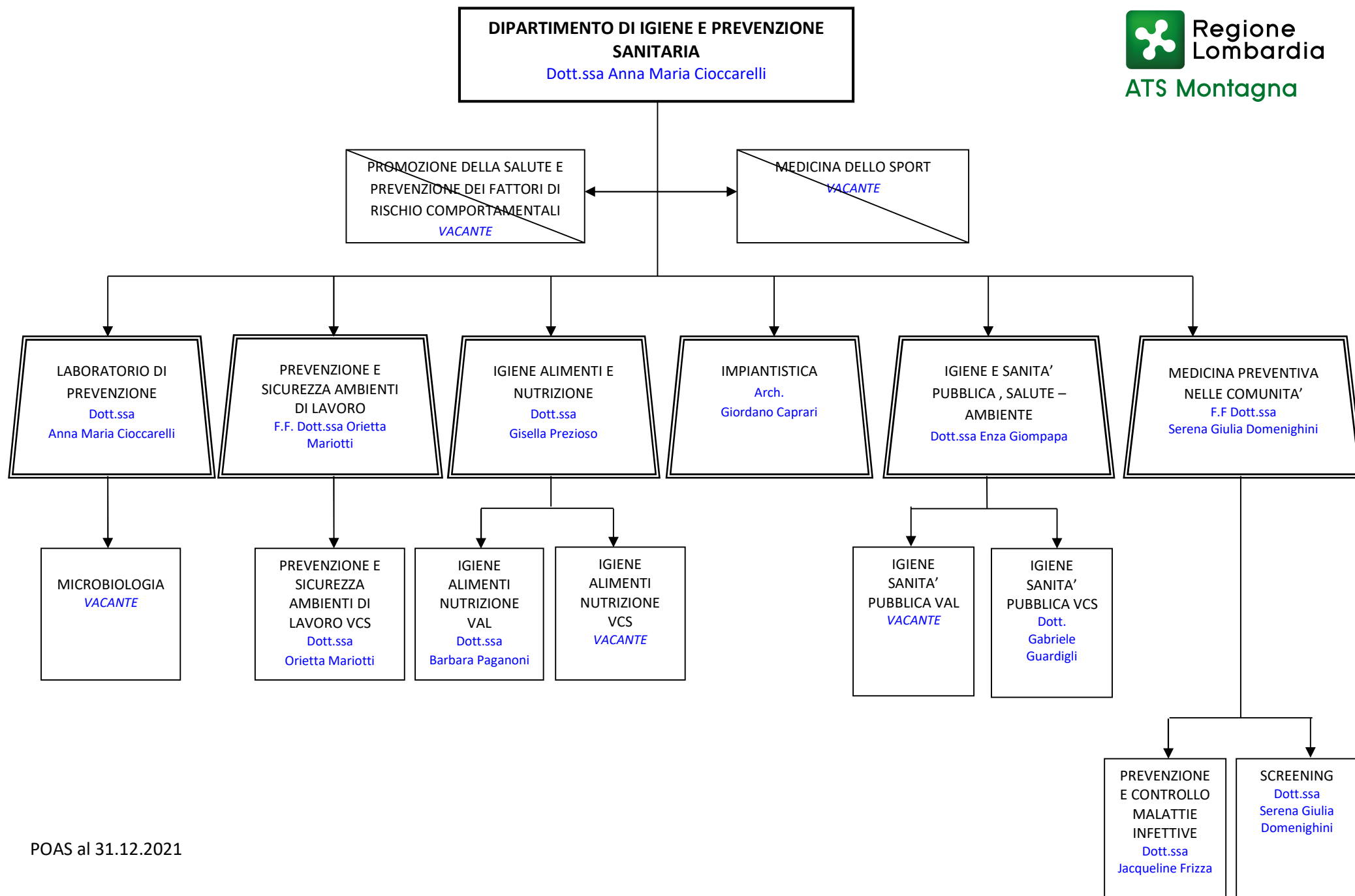


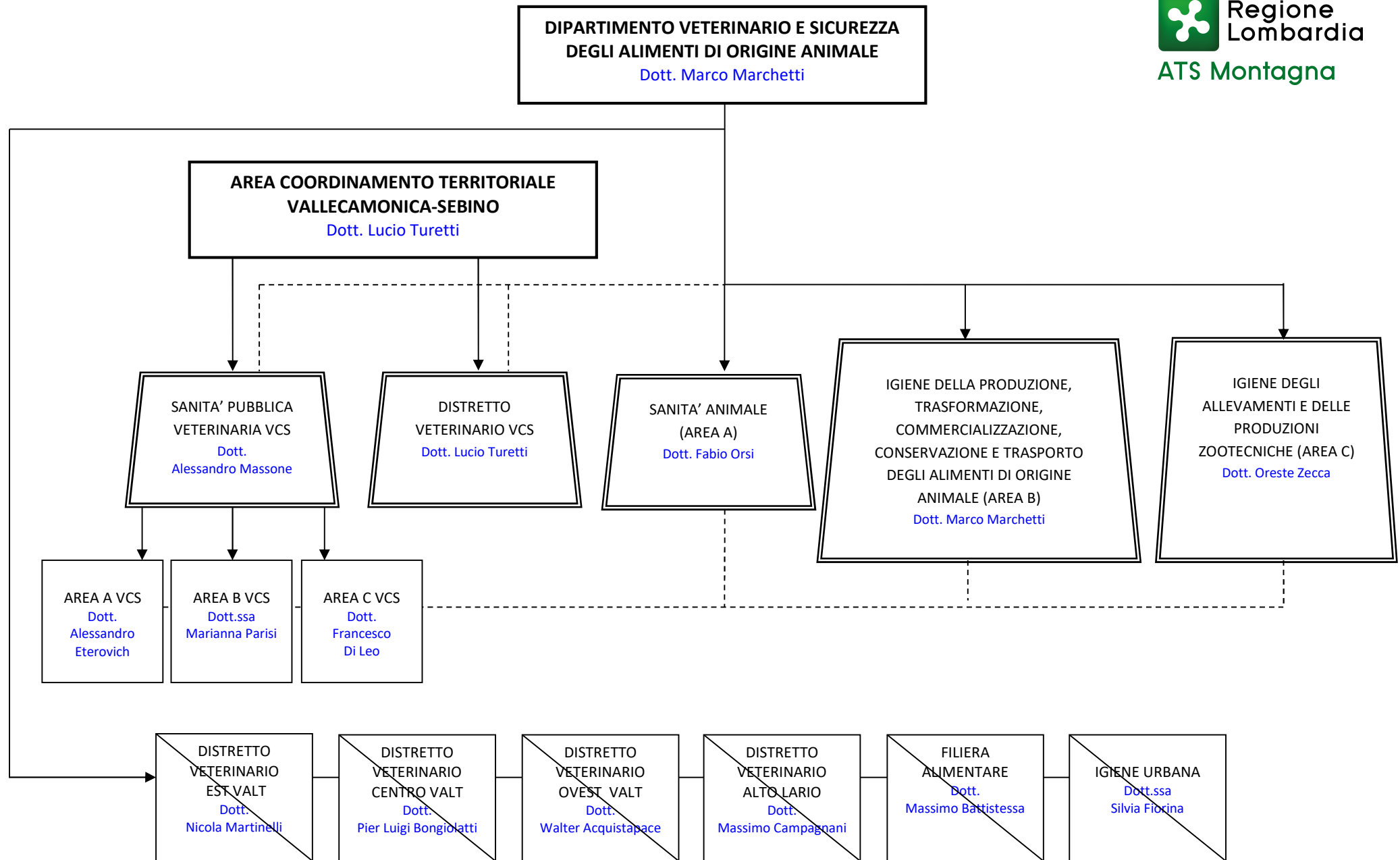


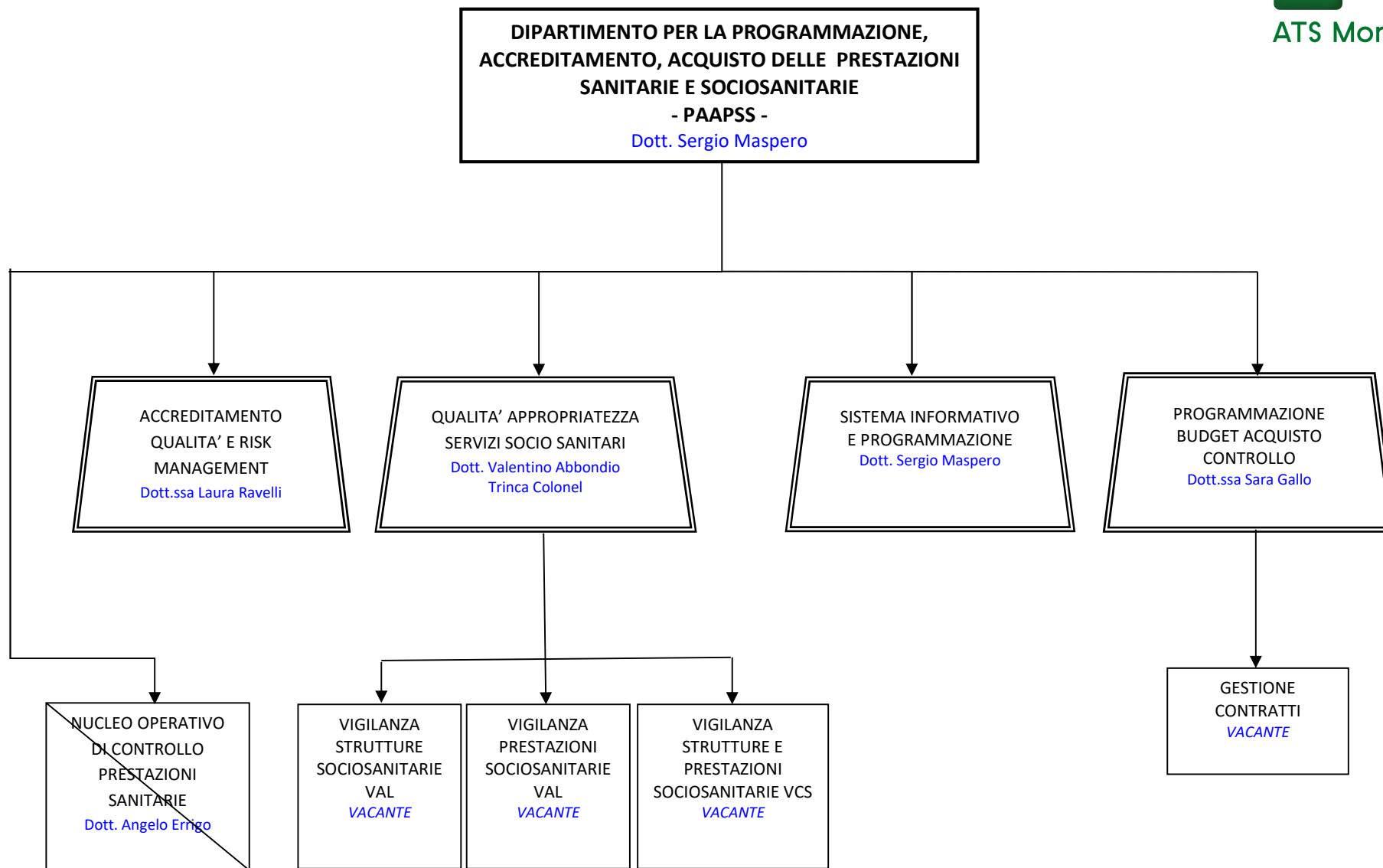












**DIPARTIMENTO DELLA PROGRAMMAZIONE
PER L'INTEGRAZIONE DELLE PRESTAZIONI
SOCIOSANITARIE CON QUELLE SOCIALI
- PIPSS -
Dott.ssa Giacinta Pini**

